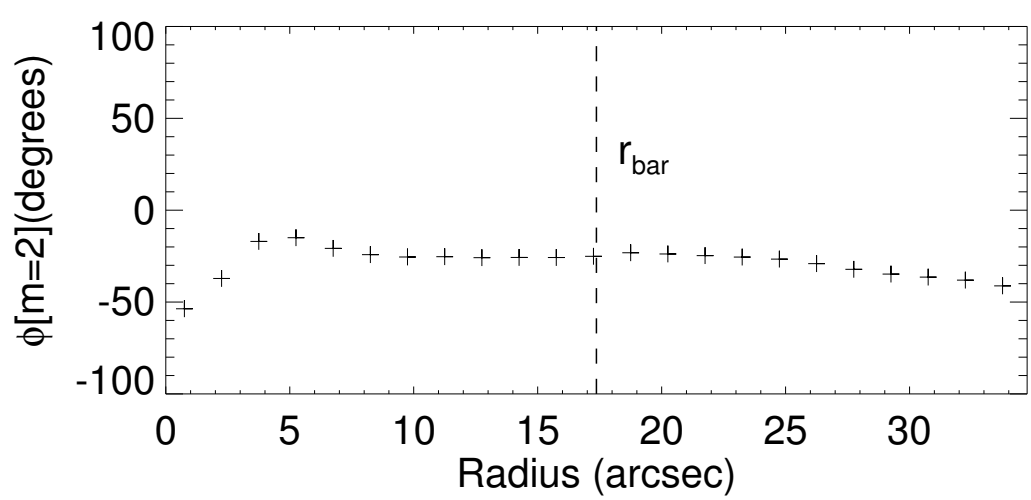
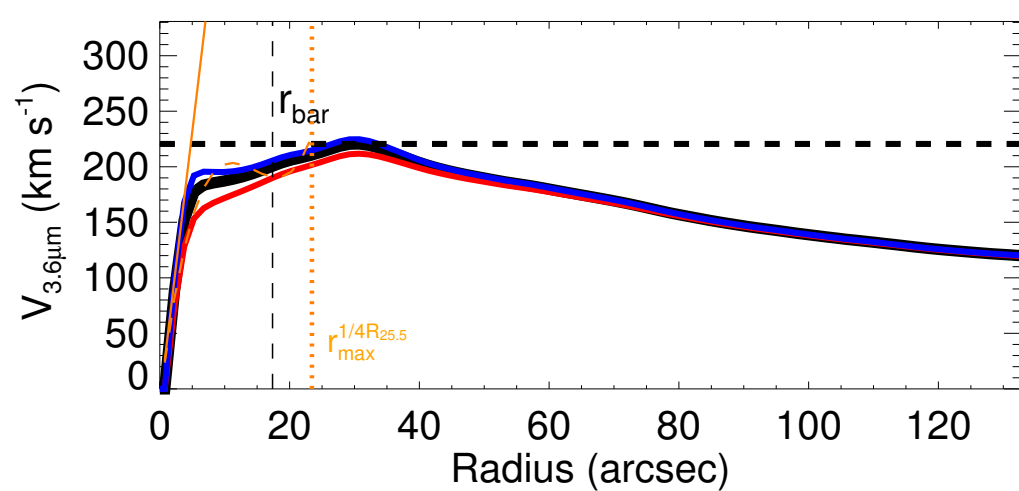
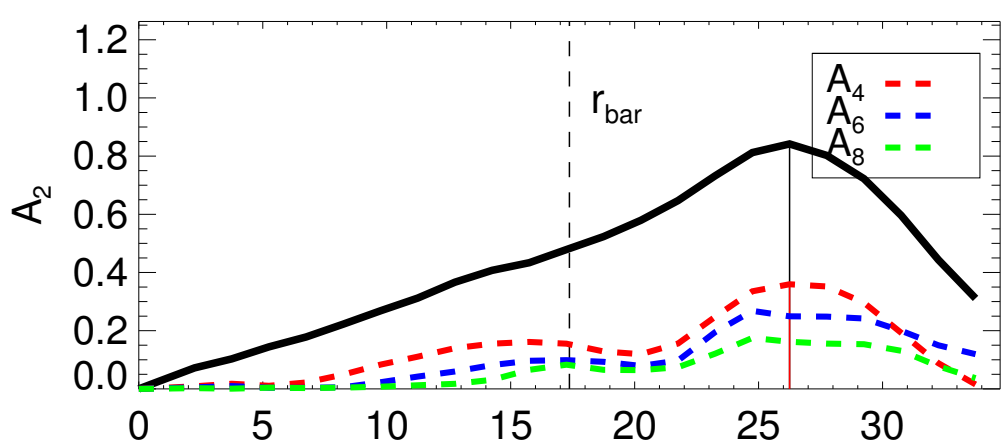
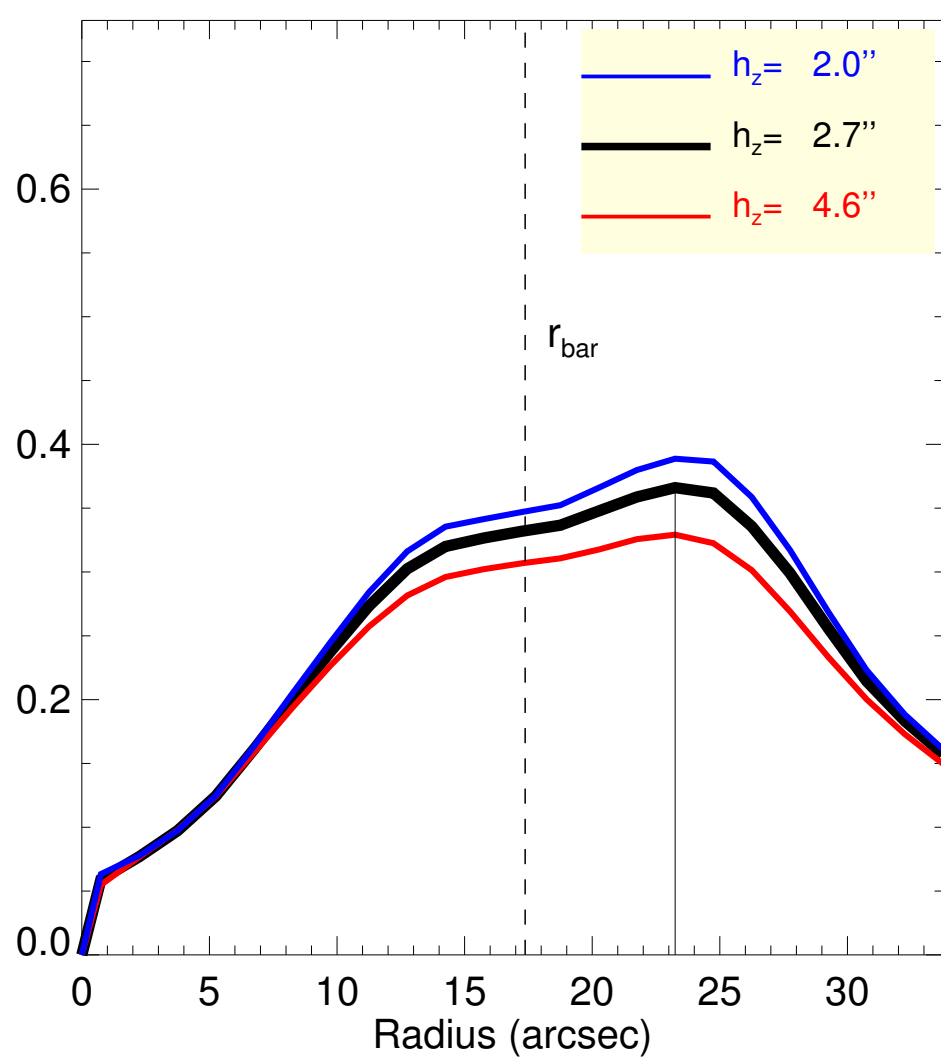
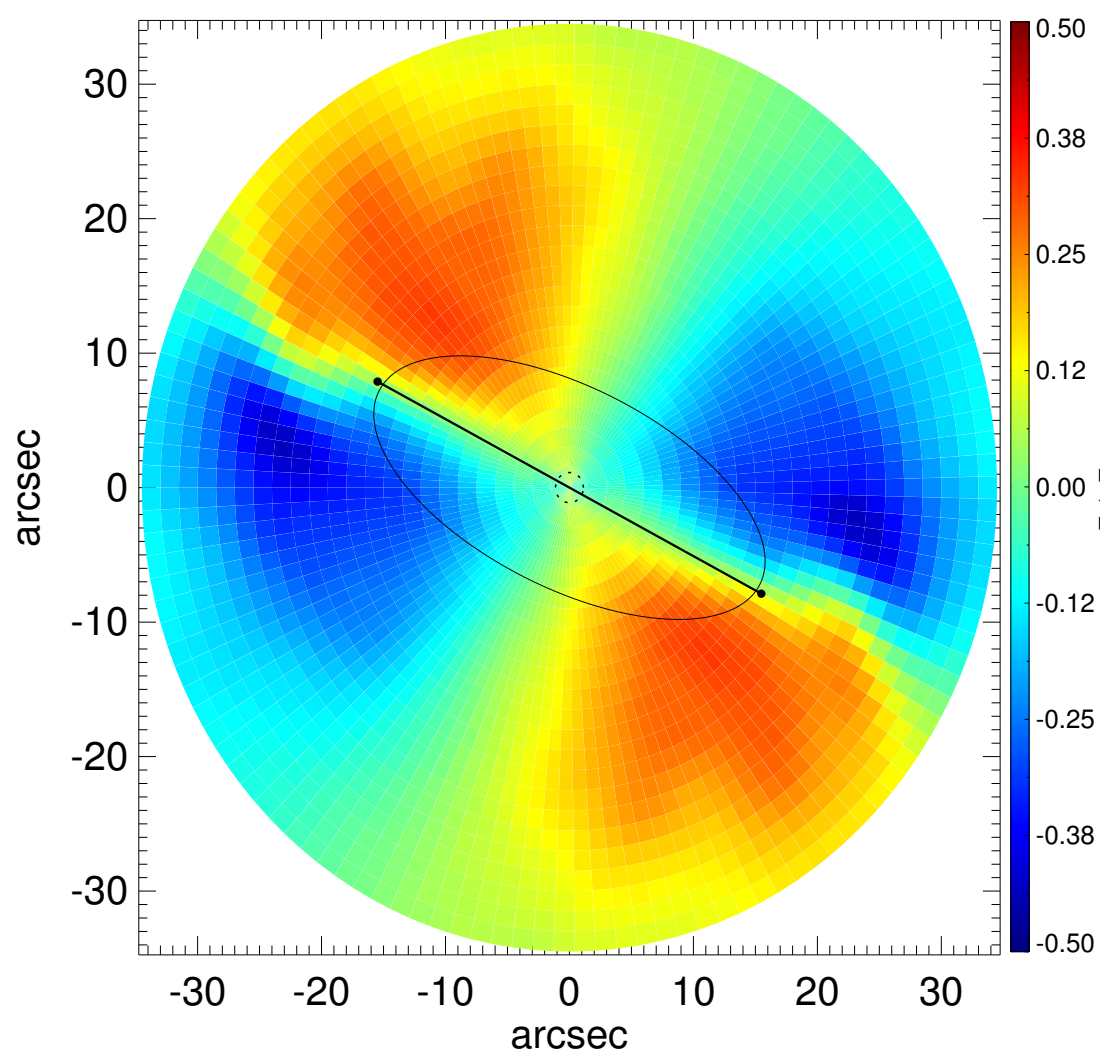
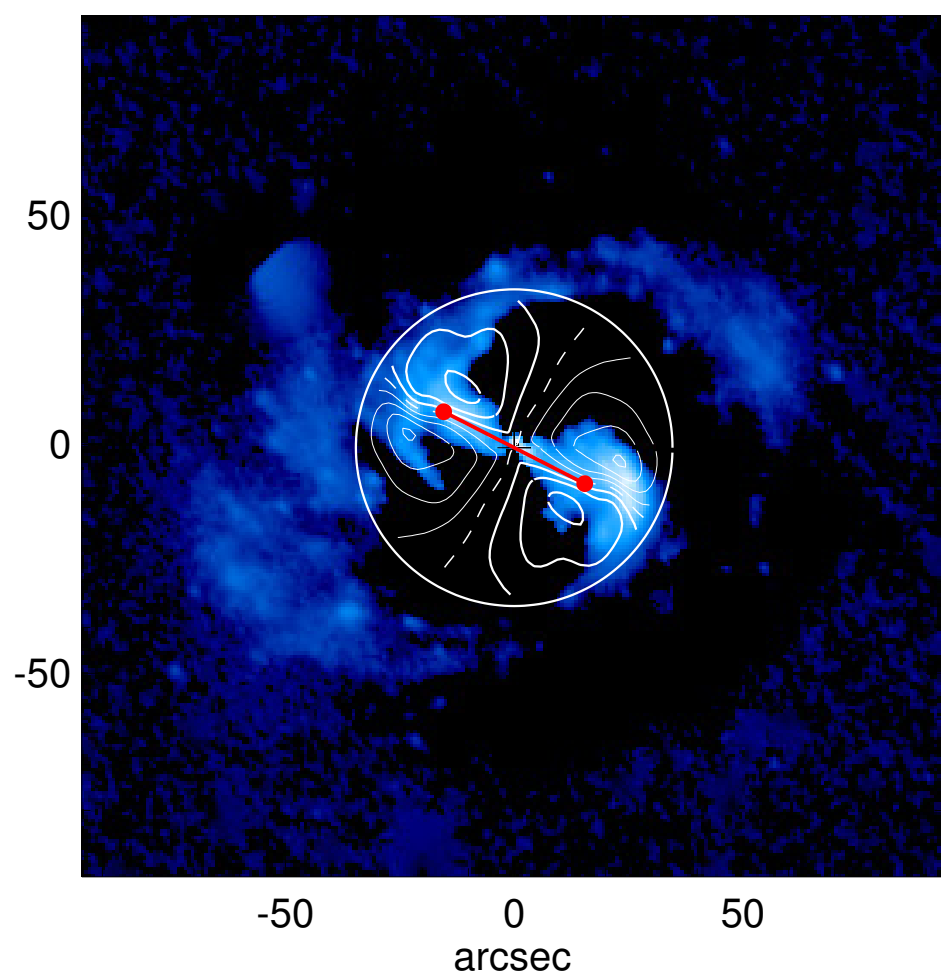
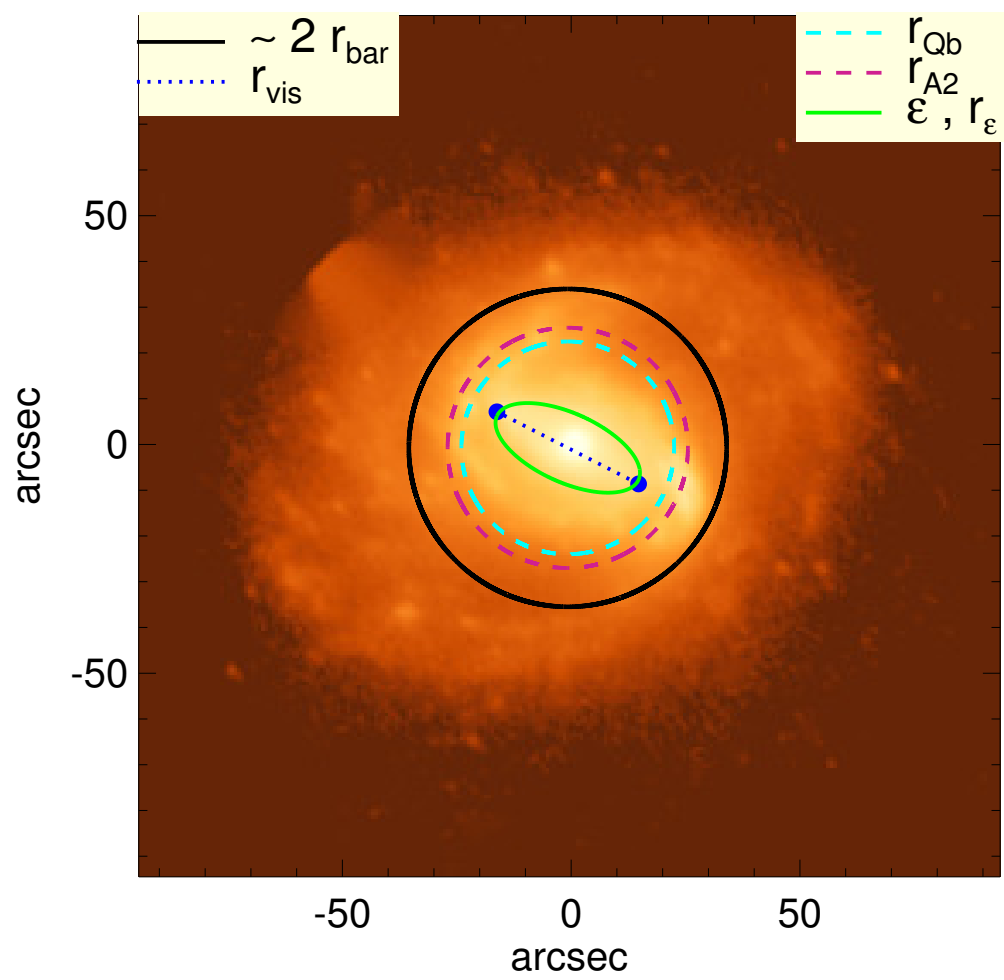


NGC 3583



Q_b : $0.37^{+0.02}_{-0.04}$	A_2^{max} : 0.84
r_{Qb} : 23.2 arcsec	r_{A2} : 26.2 arcsec
$Q_b^{\text{halo-corr}}$: 0.30	$A_2(r_{\text{bar}})$: 0.48
$r_{\text{Qb}}^{\text{halo-corr}}$: 23.2 arcsec	A_4^{max} : 0.36
$Q_b^{\text{bar-only}}$: 0.22	$V_{3.6\mu\text{m}}^{\text{max}}$: $220.6^{+4.2}_{-8.8}$ km/s
$r_{\text{Qb}}^{\text{bar-only}}$: 12.8 arcsec	$r_{3.6\mu\text{m}}^{\text{max}}$: 30.75 arcsec
$(Q_b^{\text{bar-only}})^{\text{halo-corr}}$: 0.20	$V_{3.6\mu\text{m}}(R_{\text{opt}})$: $196.7^{+1.6}_{-4.0}$ km/s
$(r_{\text{Qb}}^{\text{bar-only}})^{\text{halo-corr}}$: 12.8 arcsec	$d_R V_{3.6\mu\text{m}}(0)$: $459.0^{+46.2}_{-71.8}$ km/s/kpc
$Q_T(r_{\text{bar}})$: $0.33^{+0.02}_{-0.03}$	$M_H/M_*(< R_{\text{opt}})$: 0.83
$Q_T^{\text{halo-corr}}(r_{\text{bar}})$: 0.29	a : 9.0 kpc
ϵ : 0.55	V_{∞} : 264.8 km/s

