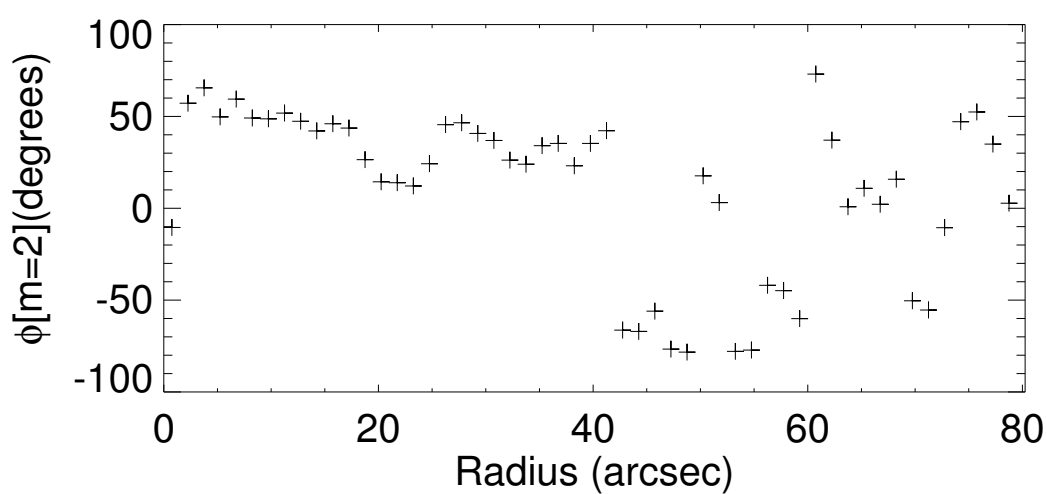
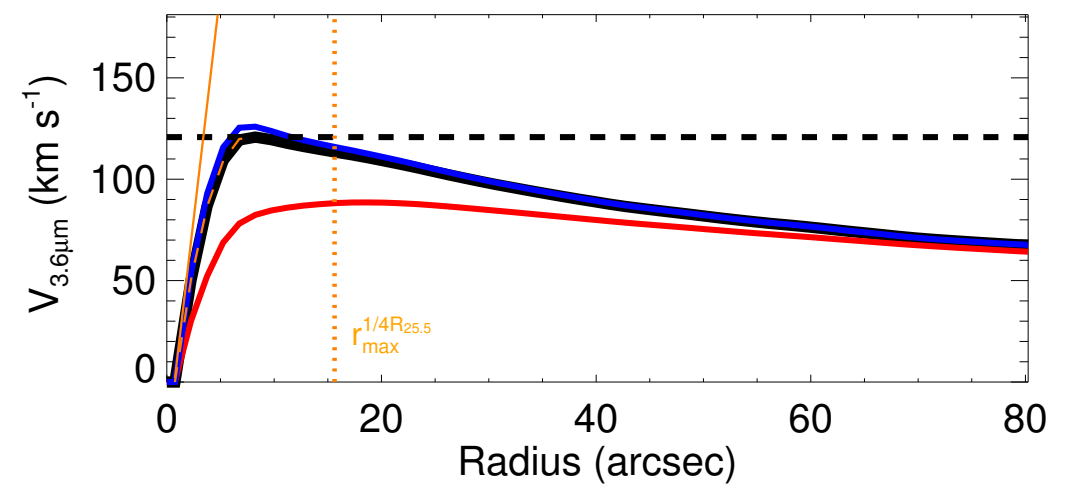
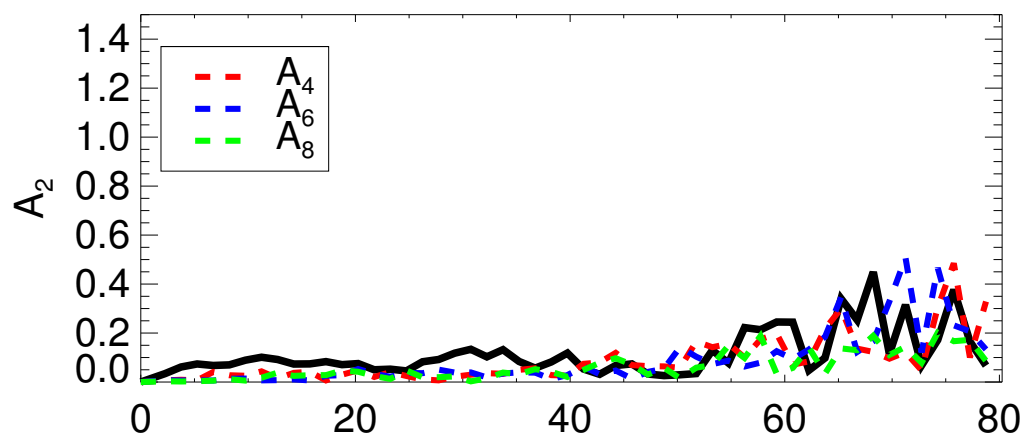
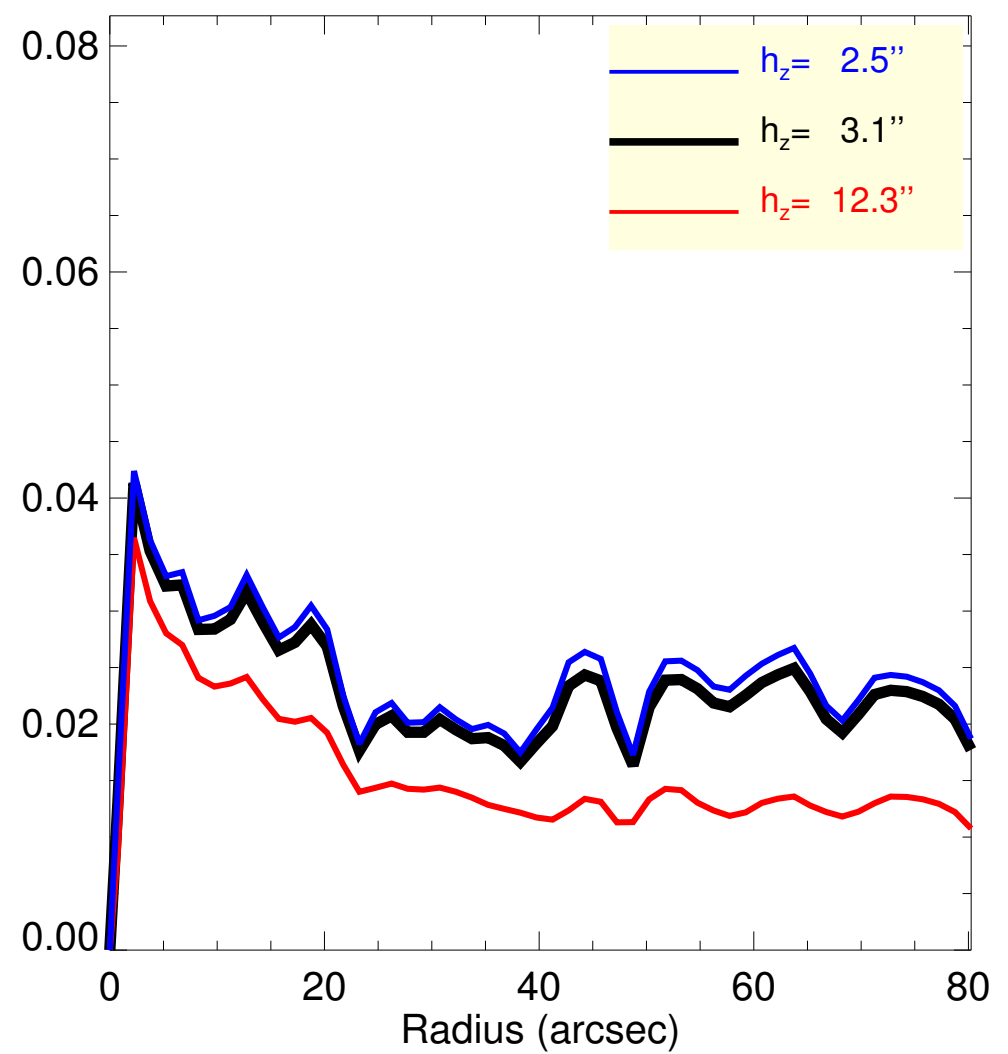
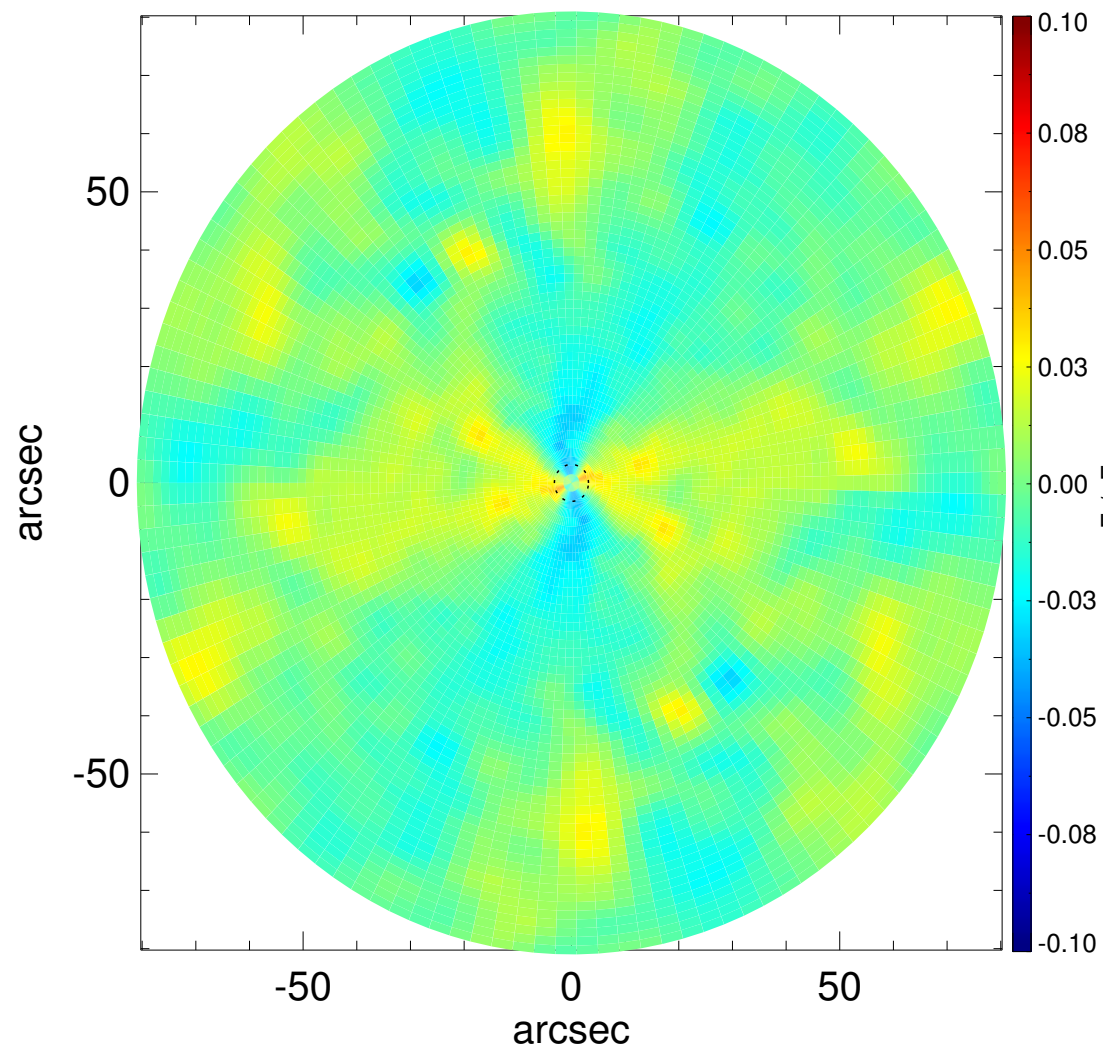
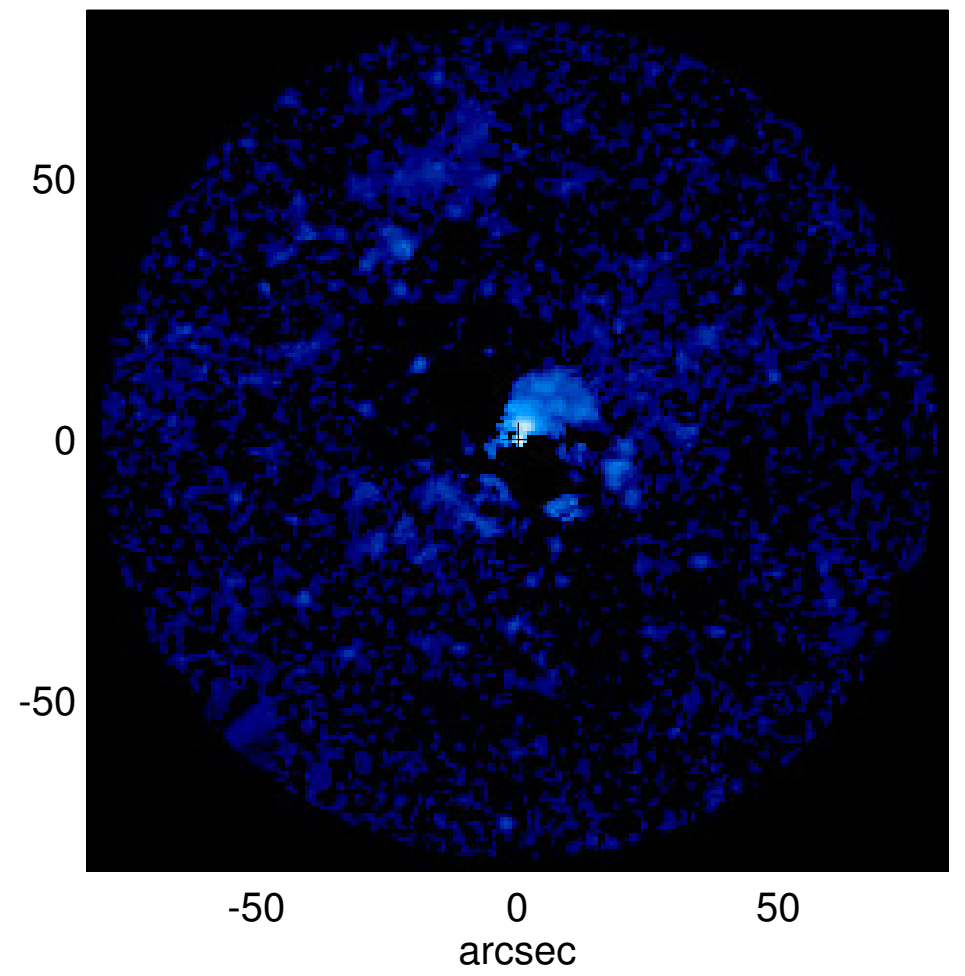
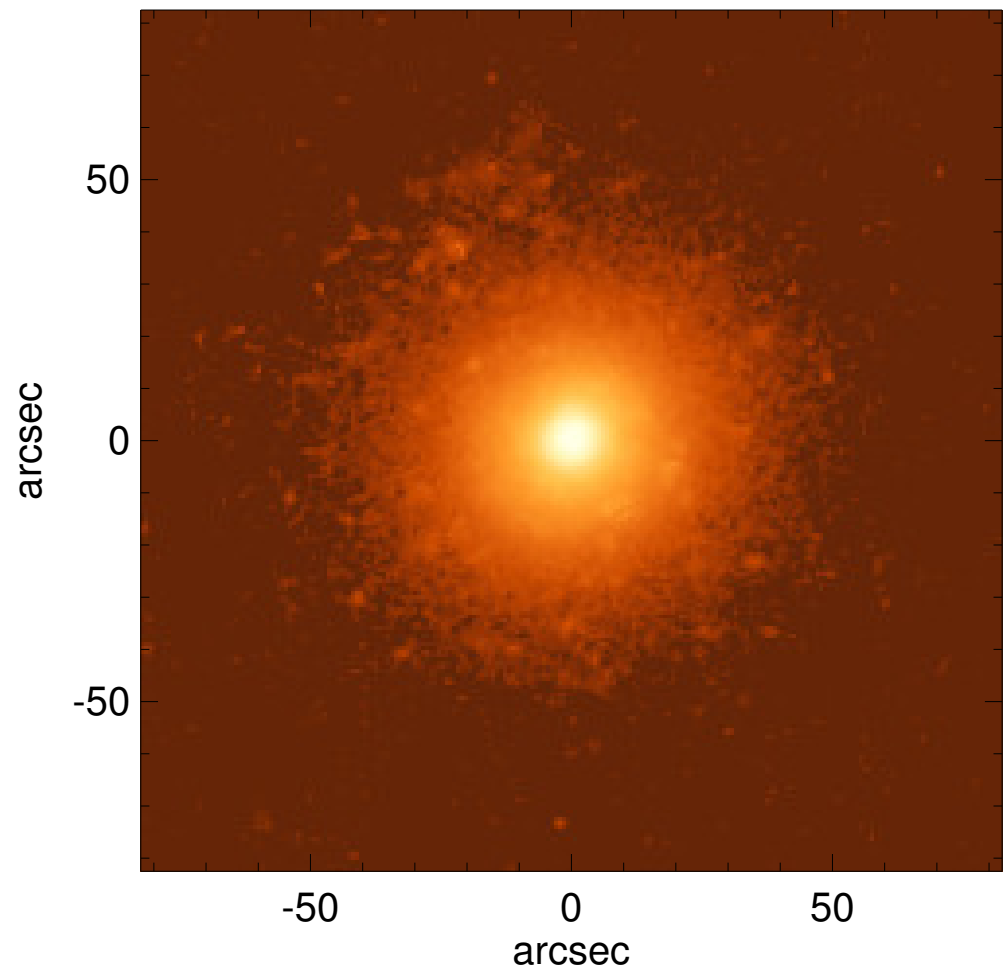


# NGC 3928



Q <sub>b</sub> : ...	A <sub>2</sub> <sup>max</sup> : ...
r <sub>Qb</sub> : ...	r <sub>A2</sub> : ...
Q <sub>b</sub> <sup>halo-corr</sup> : ...	A <sub>2</sub> (r <sub>bar</sub> ) : ...
r <sub>Qb</sub> <sup>halo-corr</sup> : ...	A <sub>4</sub> <sup>max</sup> : ...
Q <sub>b</sub> <sup>bar-only</sup> : ...	V <sub>3.6μm</sub> <sup>max</sup> : 120.8 <sup>+5.1</sup> <sub>-32.2</sub> km/s
r <sub>Qb</sub> <sup>bar-only</sup> : ...	r <sub>3.6μm</sub> <sup>max</sup> : 8.25 <sup>+10.50</sup>
(Q <sub>b</sub> <sup>bar-only</sup> ) <sup>halo-corr</sup> : ...	V <sub>3.6μm</sub> (R <sub>opt</sub> ) : 89.0 <sup>+0.6</sup> <sub>-9.0</sub> km/s
(r <sub>Qb</sub> <sup>bar-only</sup> ) <sup>halo-corr</sup> : ...	d <sub>R</sub> V <sub>3.6μm</sub> (0) : 579.6 <sup>+49.9</sup> <sub>-255.1</sub> km/s/kpc
Q <sub>T</sub> (r <sub>bar</sub> ) : ...	M <sub>r</sub> /M <sub>*</sub> (<R <sub>opt</sub> ) : ...
Q <sub>T</sub> <sup>halo-corr</sup> (r <sub>bar</sub> ) : ...	a : ...
ε : ...	V <sub>∞</sub> : ...