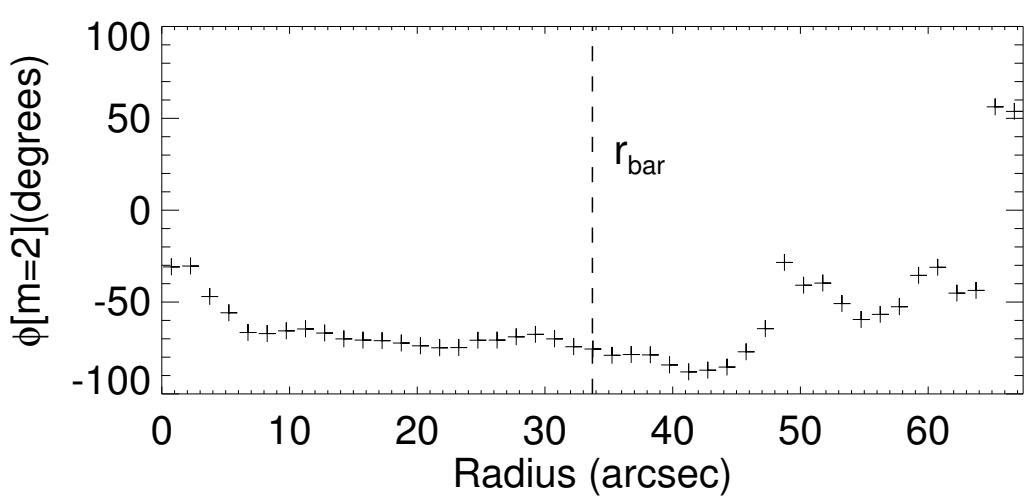
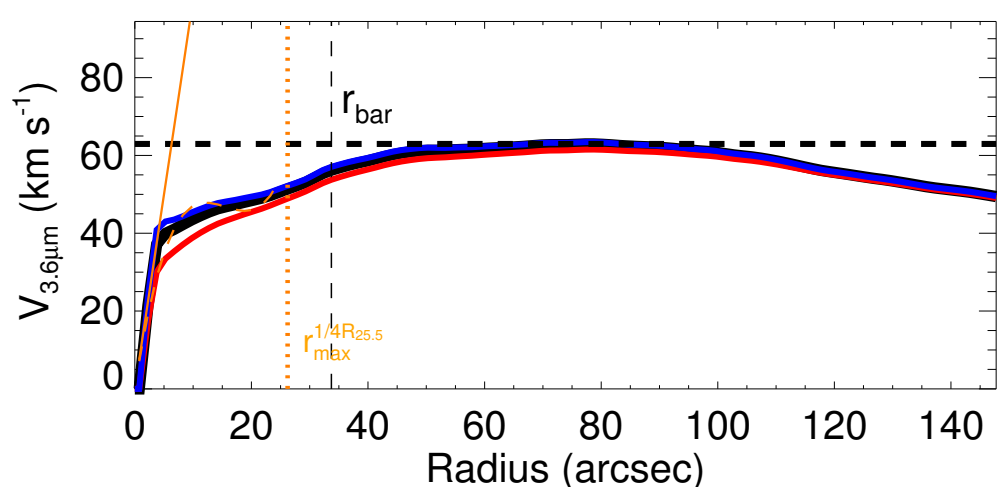
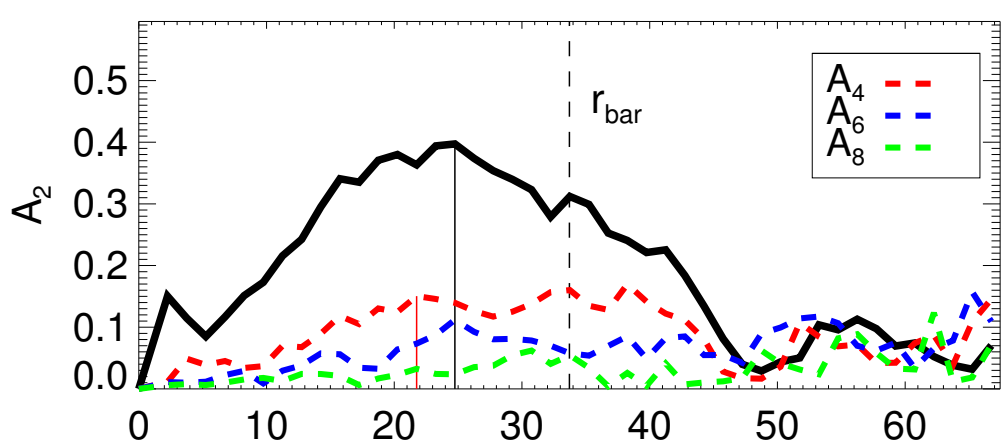
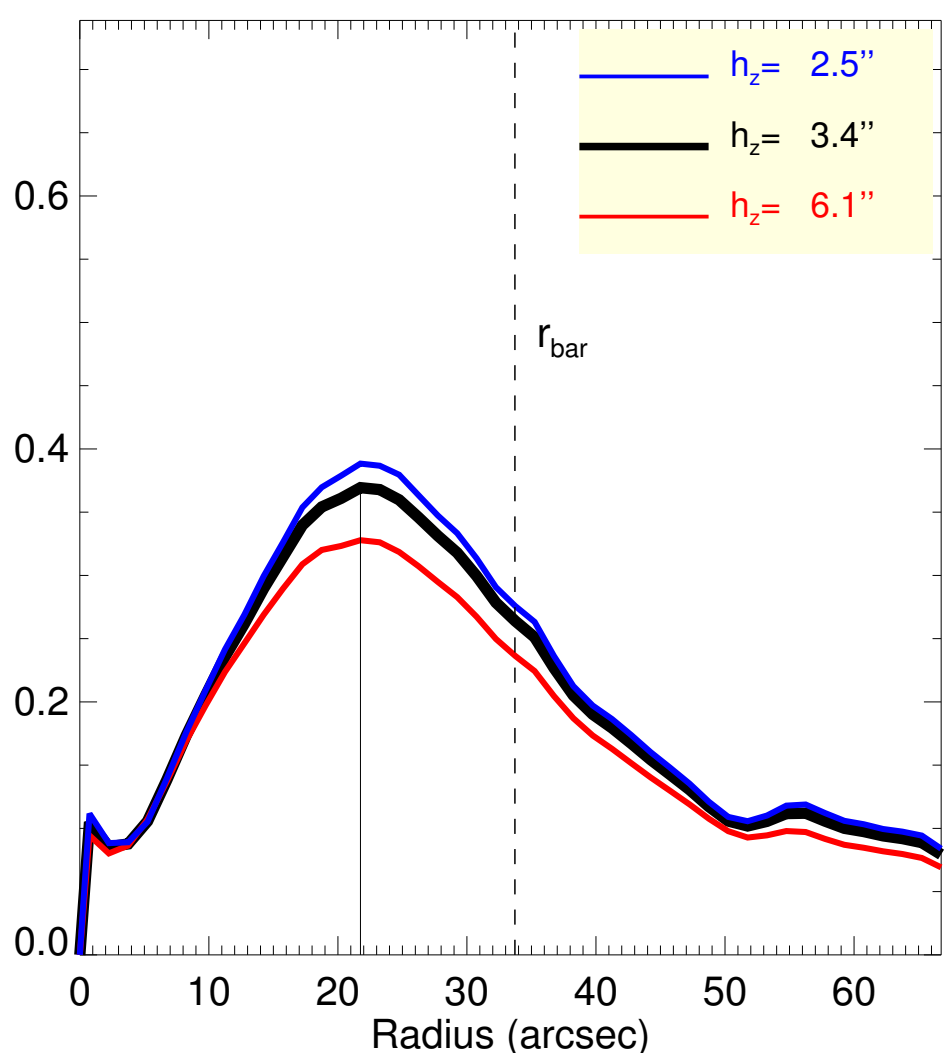
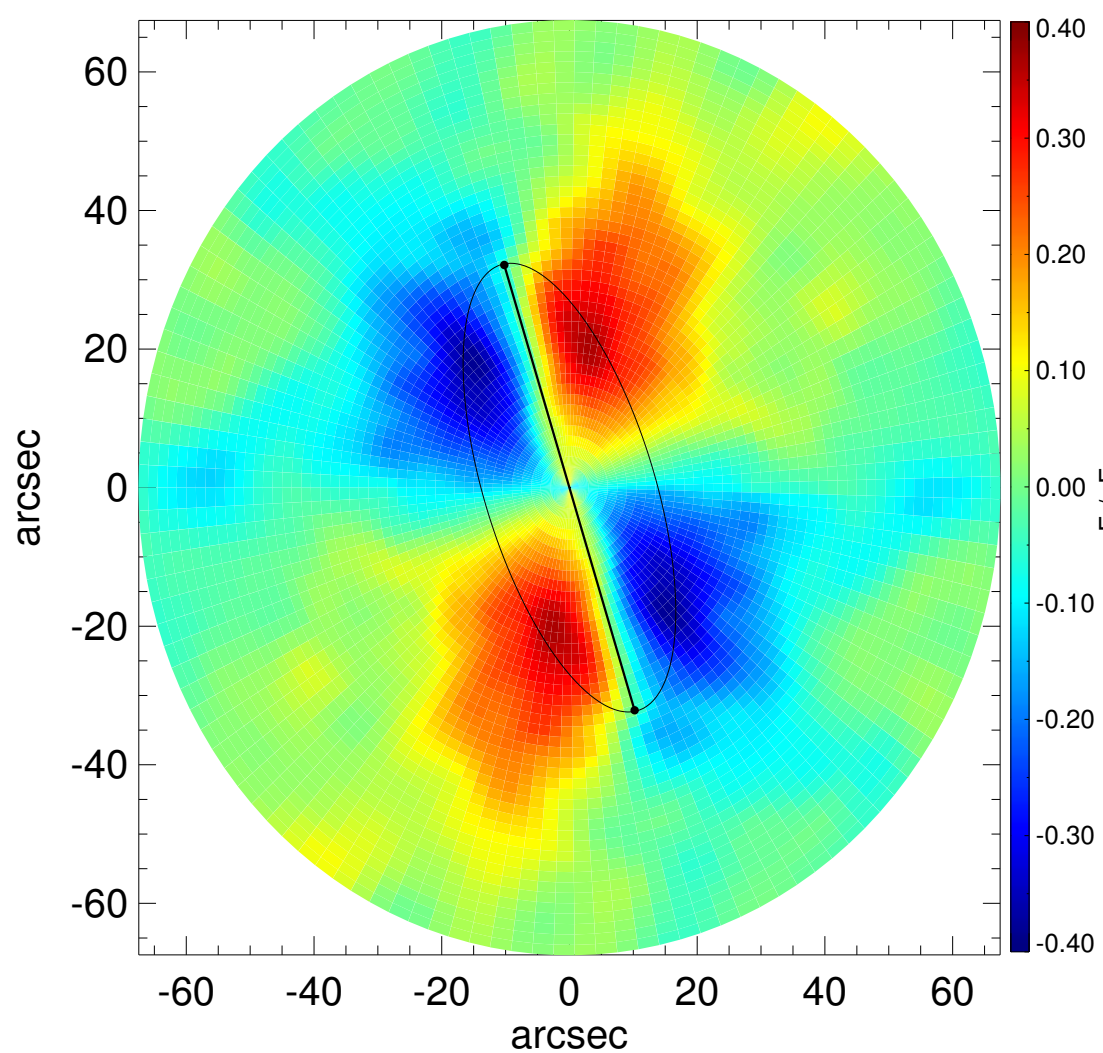
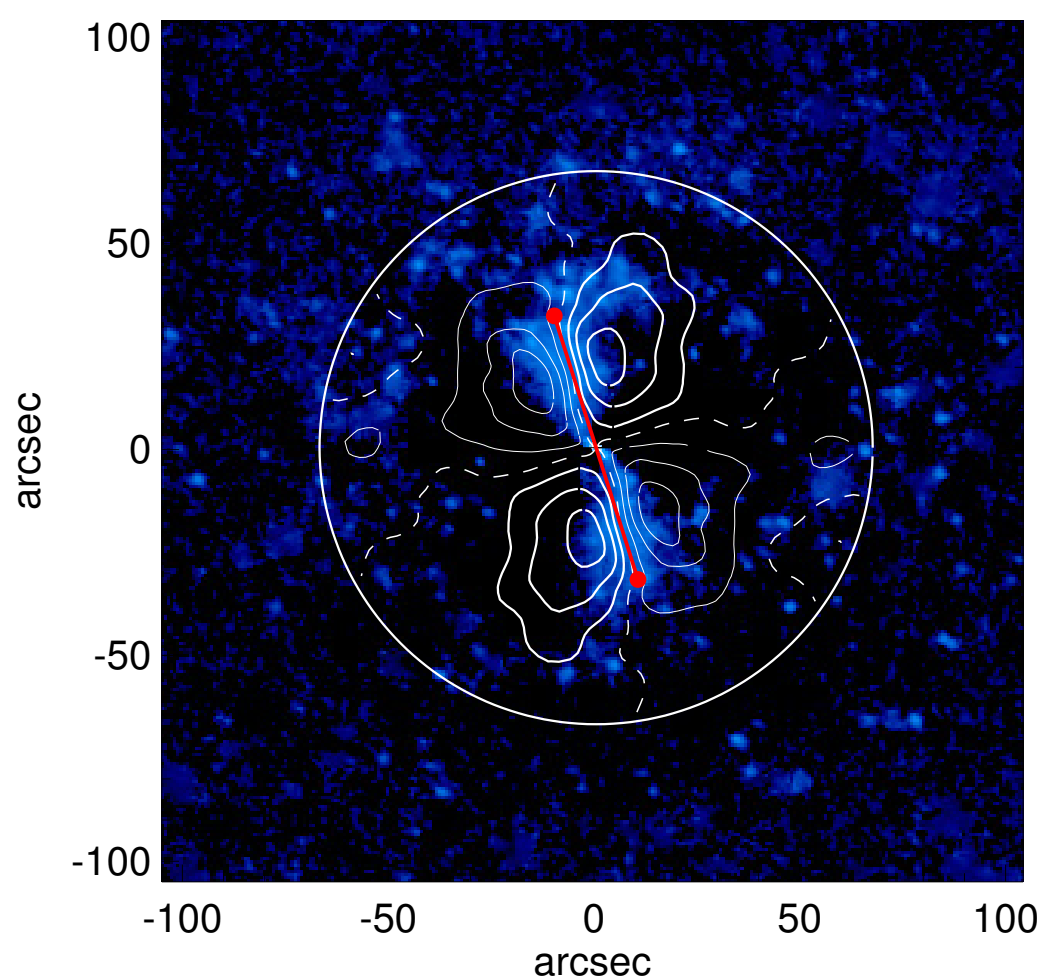
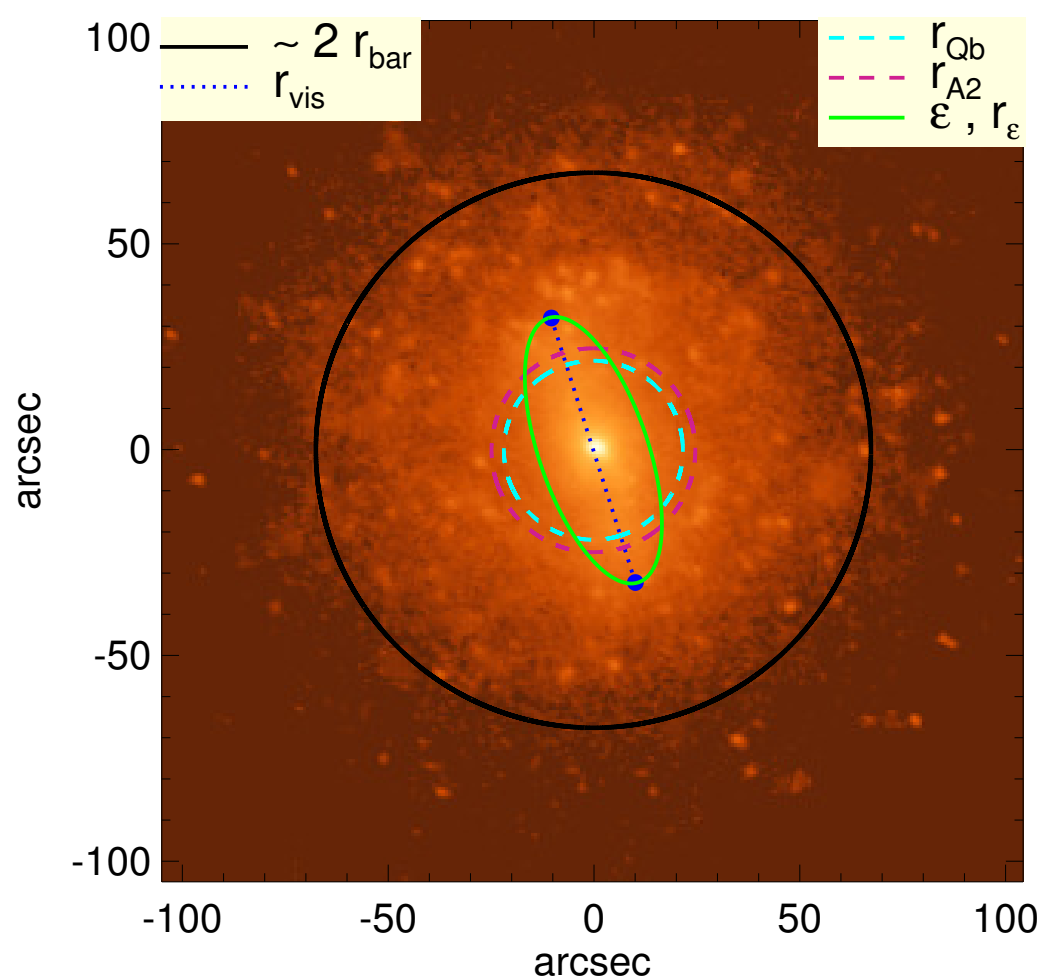


NGC 4037



$Q_b : 0.37^{+0.02}_{-0.04}$	$A_2^{\text{max}} : 0.40$
$r_{\text{Qb}} : 21.8 \text{ arcsec}$	$r_{\text{A2}} : 24.8 \text{ arcsec}$
$Q_b^{\text{halo-corr}} : 0.32$	$A_2(r_{\text{bar}}) : 0.31$
$r_{\text{Qb}}^{\text{halo-corr}} : 21.8 \text{ arcsec}$	$A_4^{\text{max}} : 0.15$
$Q_b^{\text{bar-only}} : 0.34$	$V_{3.6\mu\text{m}}^{\text{max}} : 63.0^{+0.5}_{-1.4} \text{ km/s}$
$r_{\text{Qb}}^{\text{bar-only}} : 21.8 \text{ arcsec}$	$r_{3.6\mu\text{m}}^{\text{max}} : 78.75 \text{ arcsec}$
$(Q_b^{\text{bar-only}})^{\text{halo-corr}} : 0.30$	$V_{3.6\mu\text{m}}(R_{\text{opt}}) : 60.5^{+0.3}_{-1.0} \text{ km/s}$
$(r_{\text{Qb}}^{\text{bar-only}})^{\text{halo-corr}} : 18.8 \text{ arcsec}$	$d_R V_{3.6\mu\text{m}}(0) : 165.6^{+14.2}_{-29.7} \text{ km/s/kpc}$
$Q_T(r_{\text{bar}}) : 0.26^{+0.01}_{-0.03}$	$M_H/M_*(< R_{\text{opt}}) : 1.14$
$Q_T^{\text{halo-corr}}(r_{\text{bar}}) : 0.21$	$a : 6.6 \text{ kpc}$
$\epsilon : 0.61$	$V_{\infty} : 70.6 \text{ km/s}$

