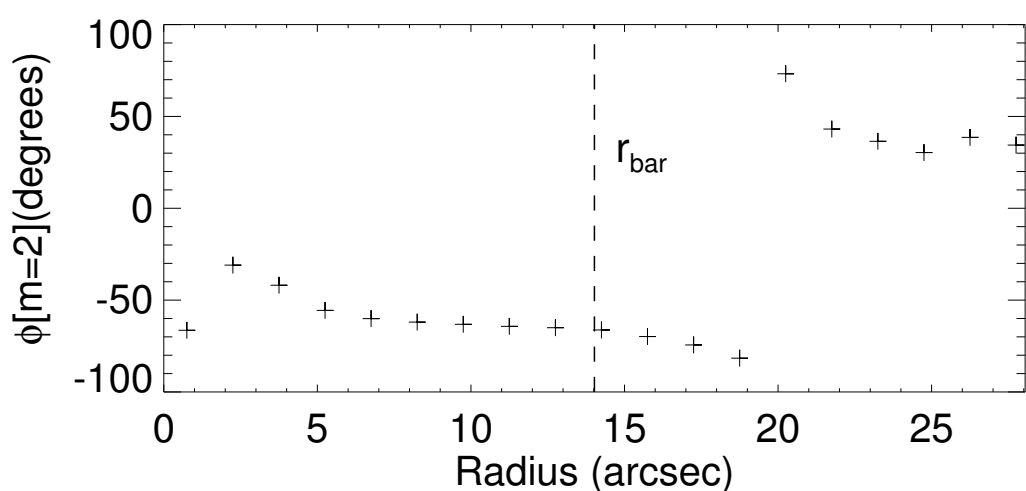
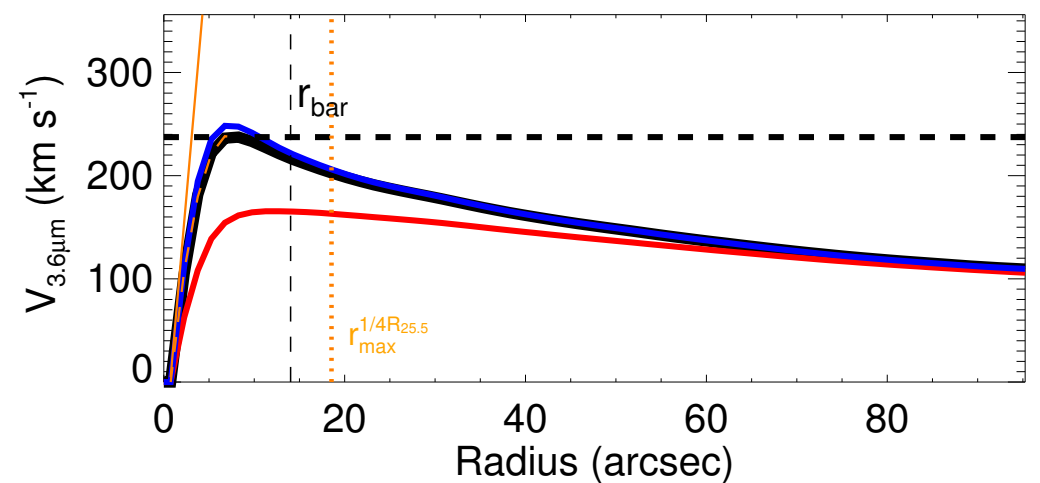
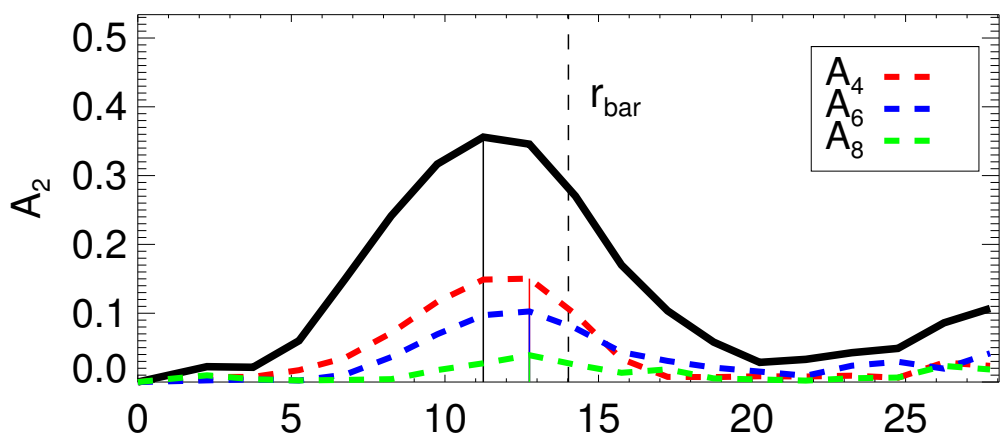
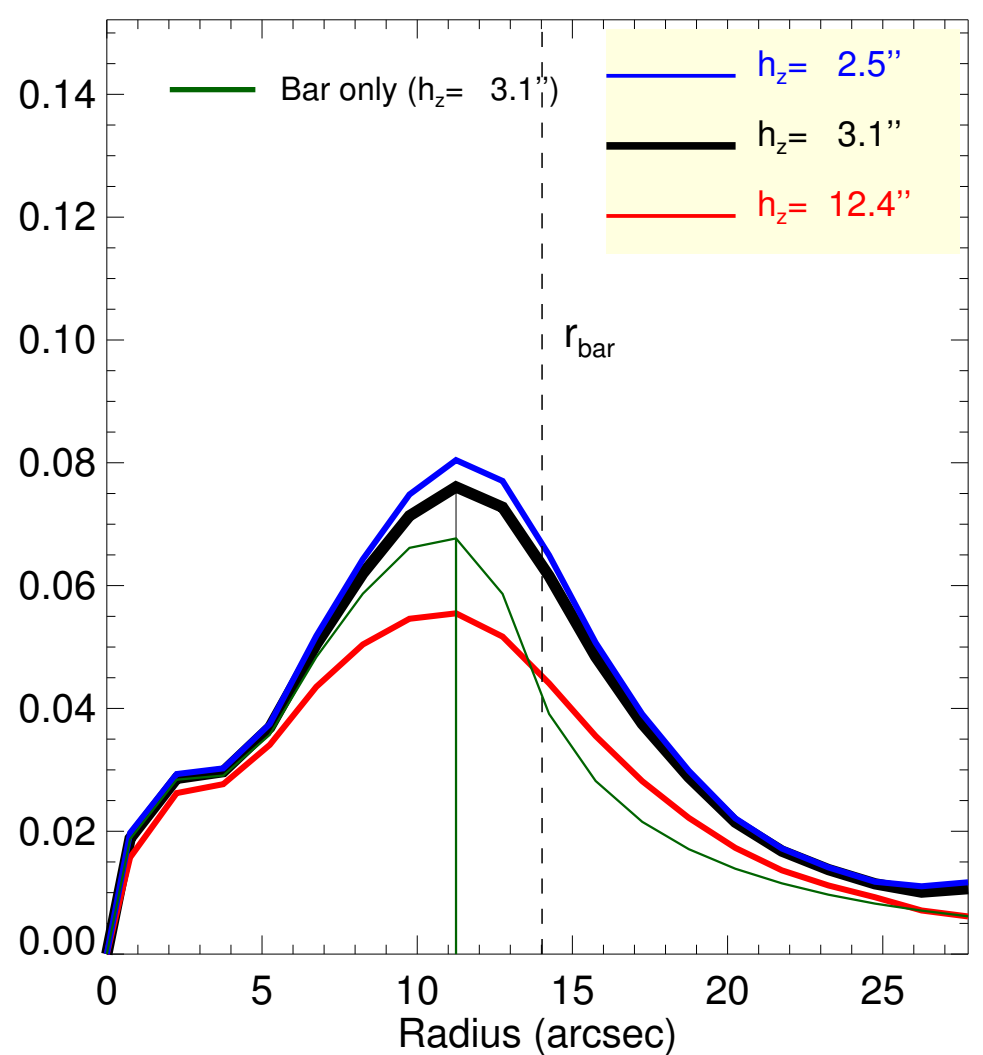
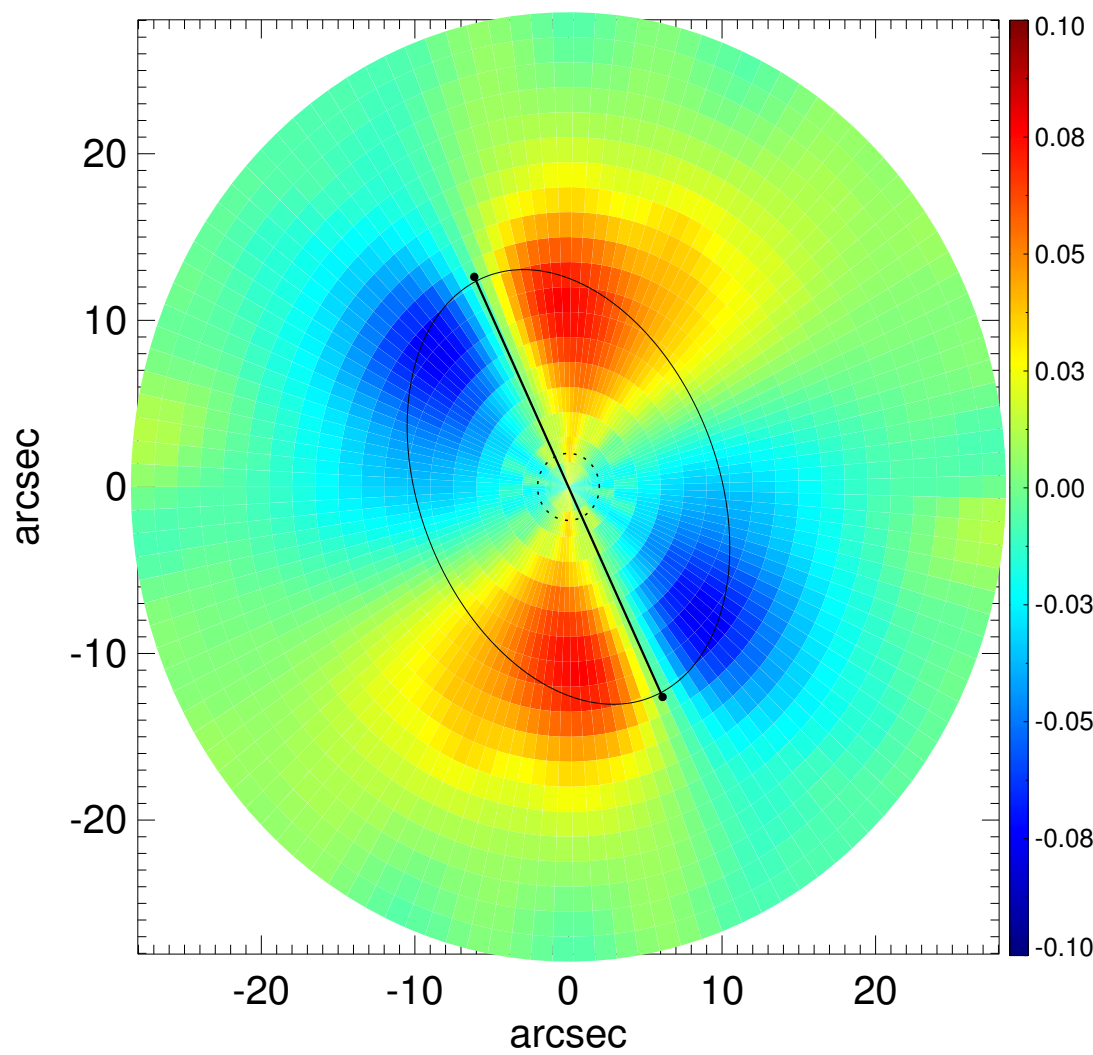
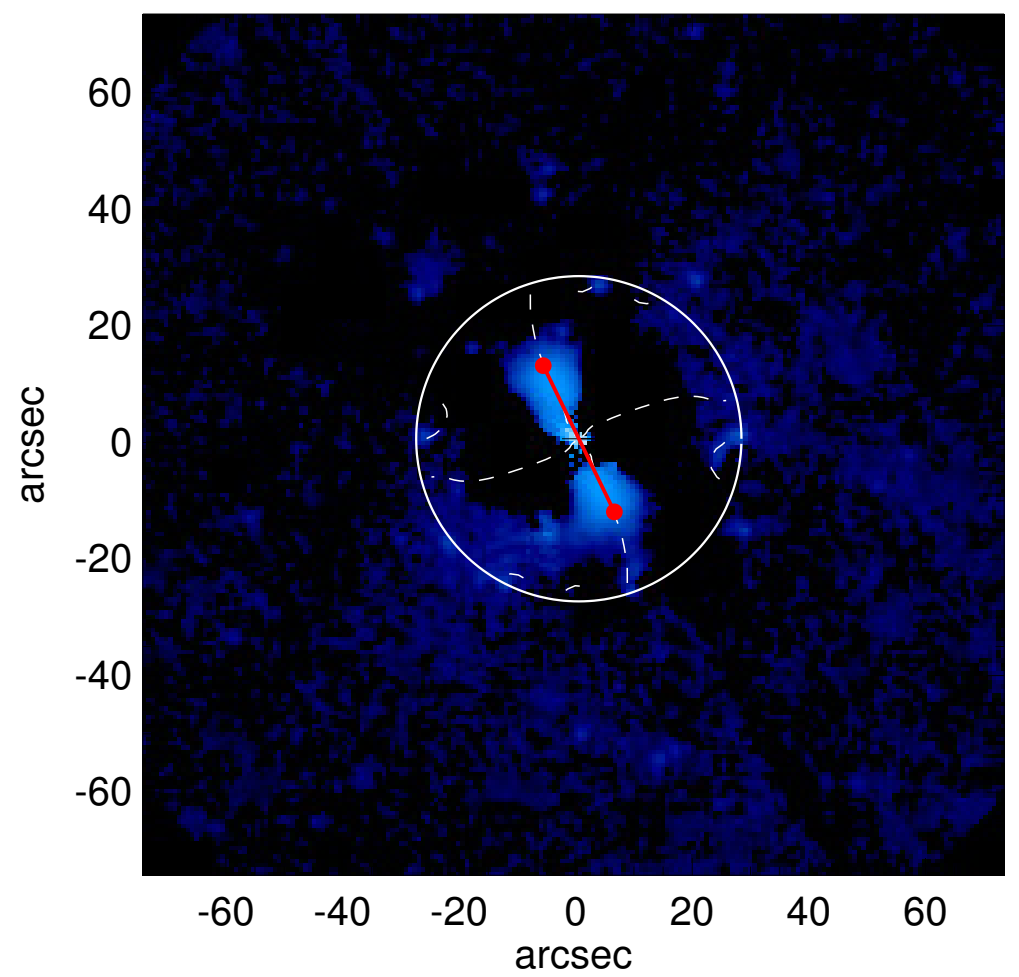
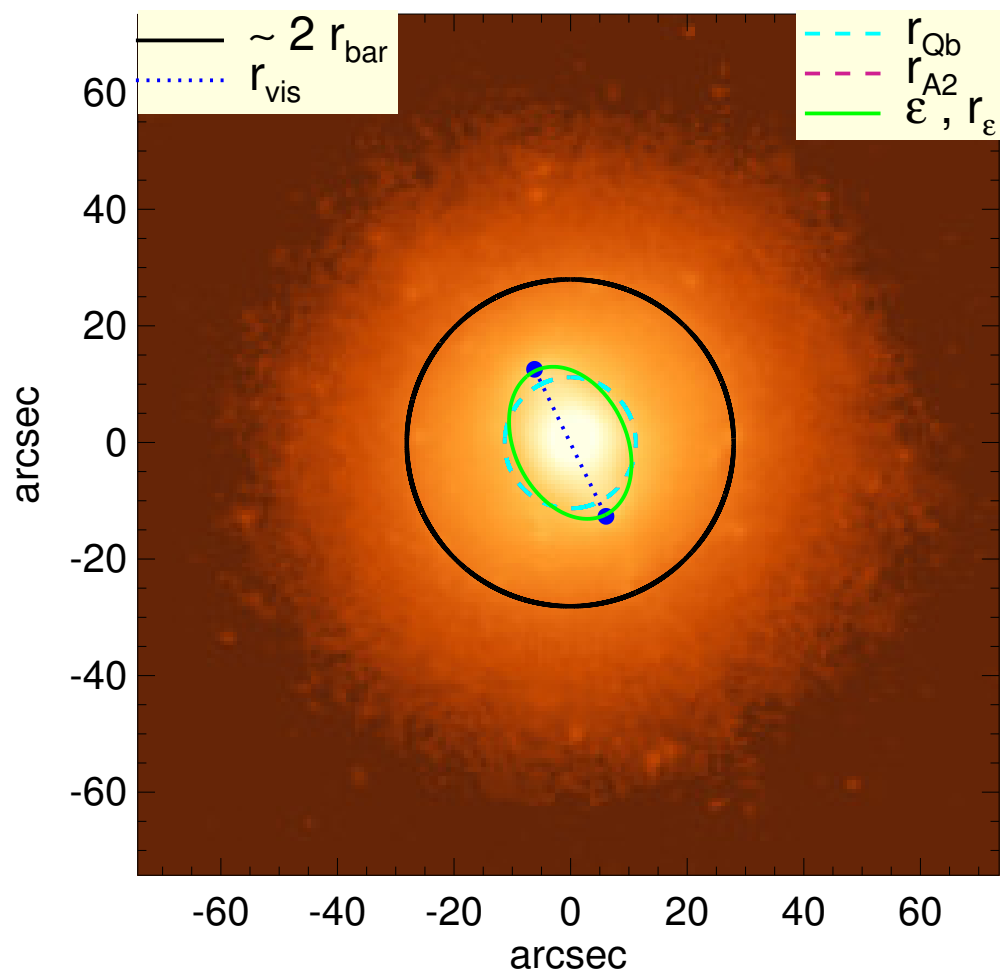


NGC 4262



$Q_b : 0.08^{+0.00}_{-0.02}$	$A_2^{\text{max}} : 0.36$
$r_{\text{Qb}} : 11.2 \text{ arcsec}$	$r_{\text{A2}} : 11.2 \text{ arcsec}$
$Q_b^{\text{halo-corr}} : \dots$	$A_2(r_{\text{bar}}) : 0.27$
$r_{\text{Qb}}^{\text{halo-corr}} : \dots$	$A_4^{\text{max}} : 0.15$
$Q_b^{\text{bar-only}} : 0.07$	$V_{3.6\mu\text{m}}^{\text{max}} : 237.3^{+10.9}_{-71.8} \text{ km/s}$
$r_{\text{Qb}}^{\text{bar-only}} : 11.2 \text{ arcsec}$	$r_{3.6\mu\text{m}}^{\text{max}} : 8.25^{+1.50}_{+4.50} \text{ arcsec}$
$(Q_b^{\text{bar-only}})^{\text{halo-corr}} : \dots$	$V_{3.6\mu\text{m}}(R_{\text{opt}}) : 159.7^{+1.0}_{-15.4} \text{ km/s}$
$(r_{\text{Qb}}^{\text{bar-only}})^{\text{halo-corr}} : \dots$	$d_R V_{3.6\mu\text{m}}(0) : 1006.0^{+89.2}_{-449.4} \text{ km/s/kpc}$
$Q_T(r_{\text{bar}}) : 0.06^{+0.00}_{-0.02}$	$M_h/M_*(\langle R_{\text{opt}} \rangle) : \dots$
$Q_T^{\text{halo-corr}}(r_{\text{bar}}) : \dots$	$a : \dots$
$\epsilon : 0.30$	$V_{\infty} : \dots$