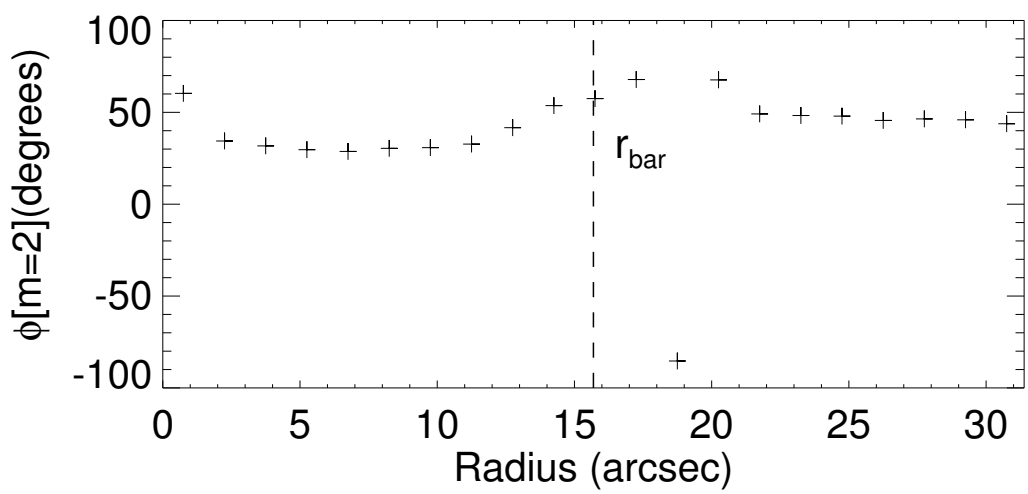
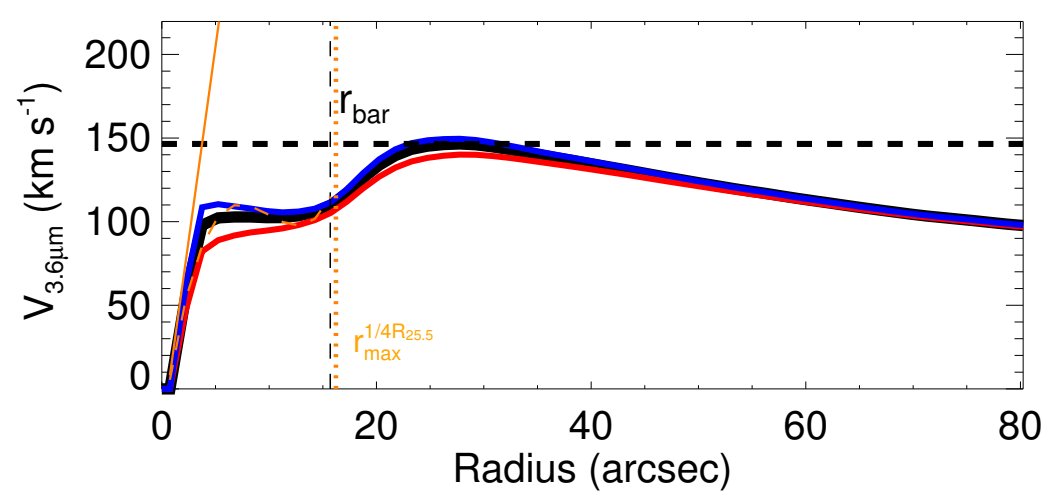
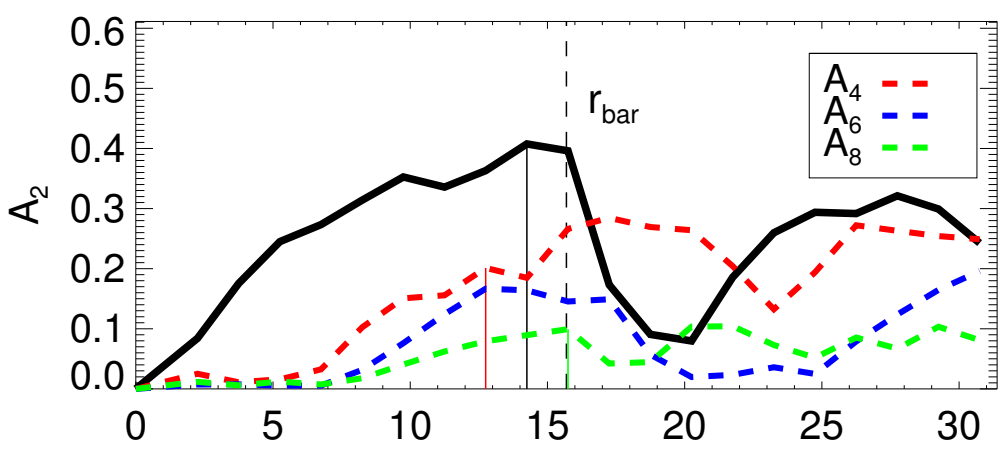
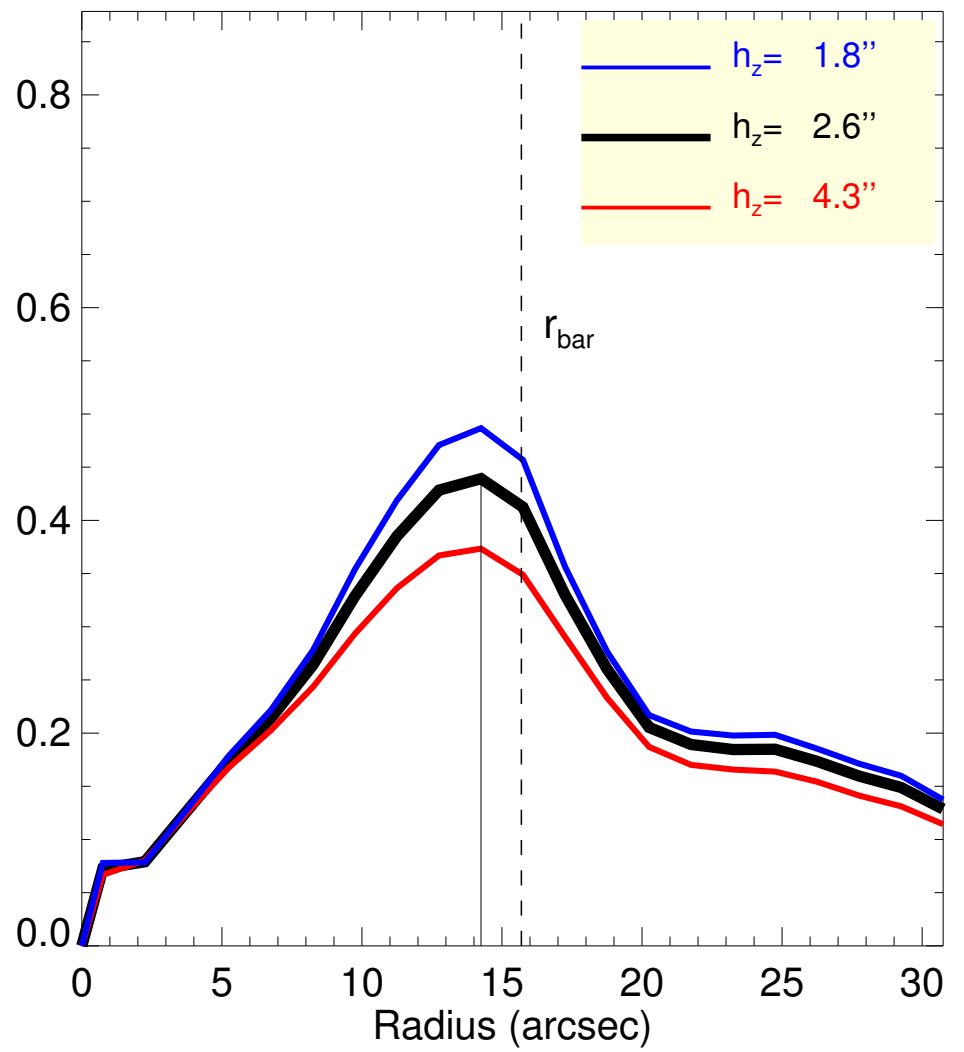
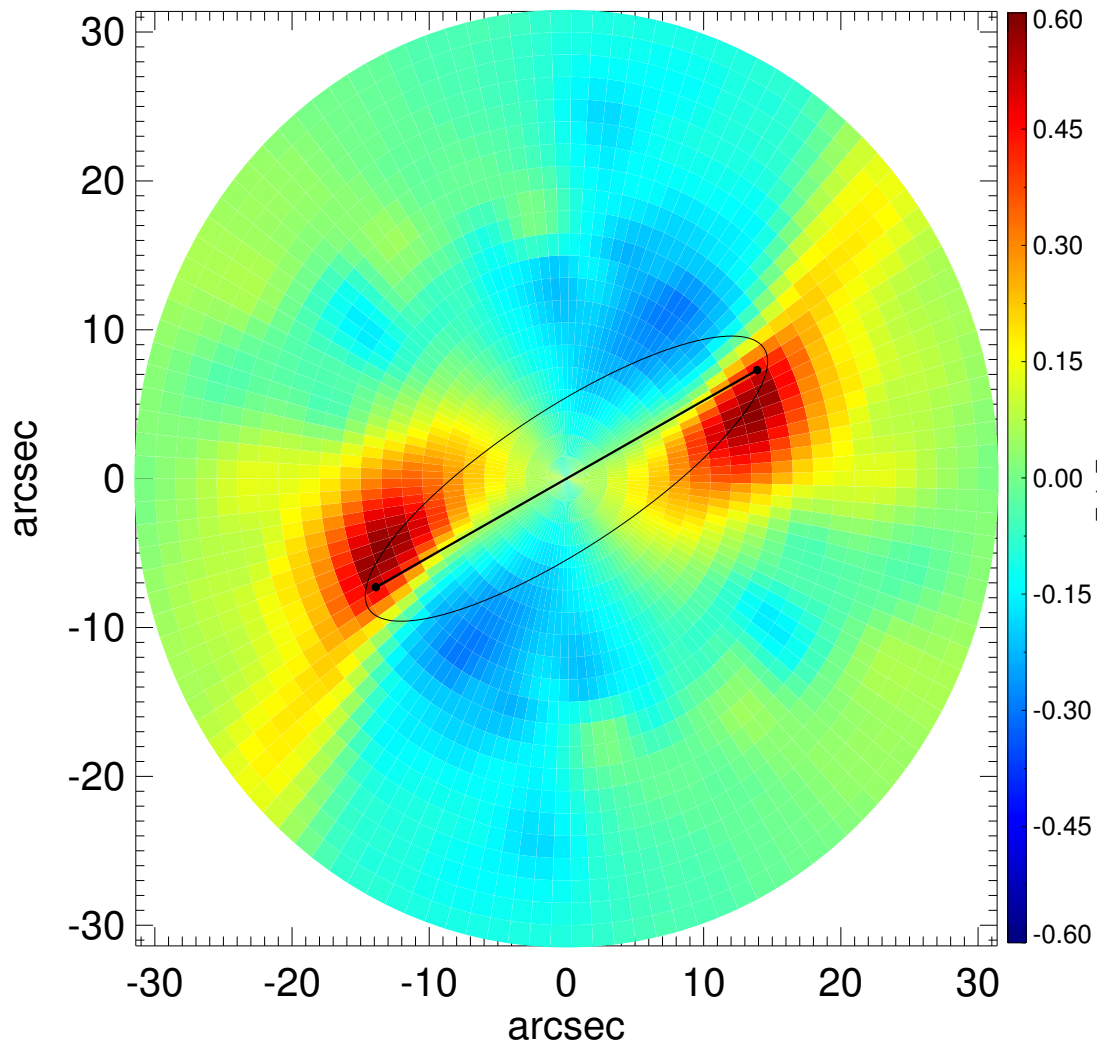
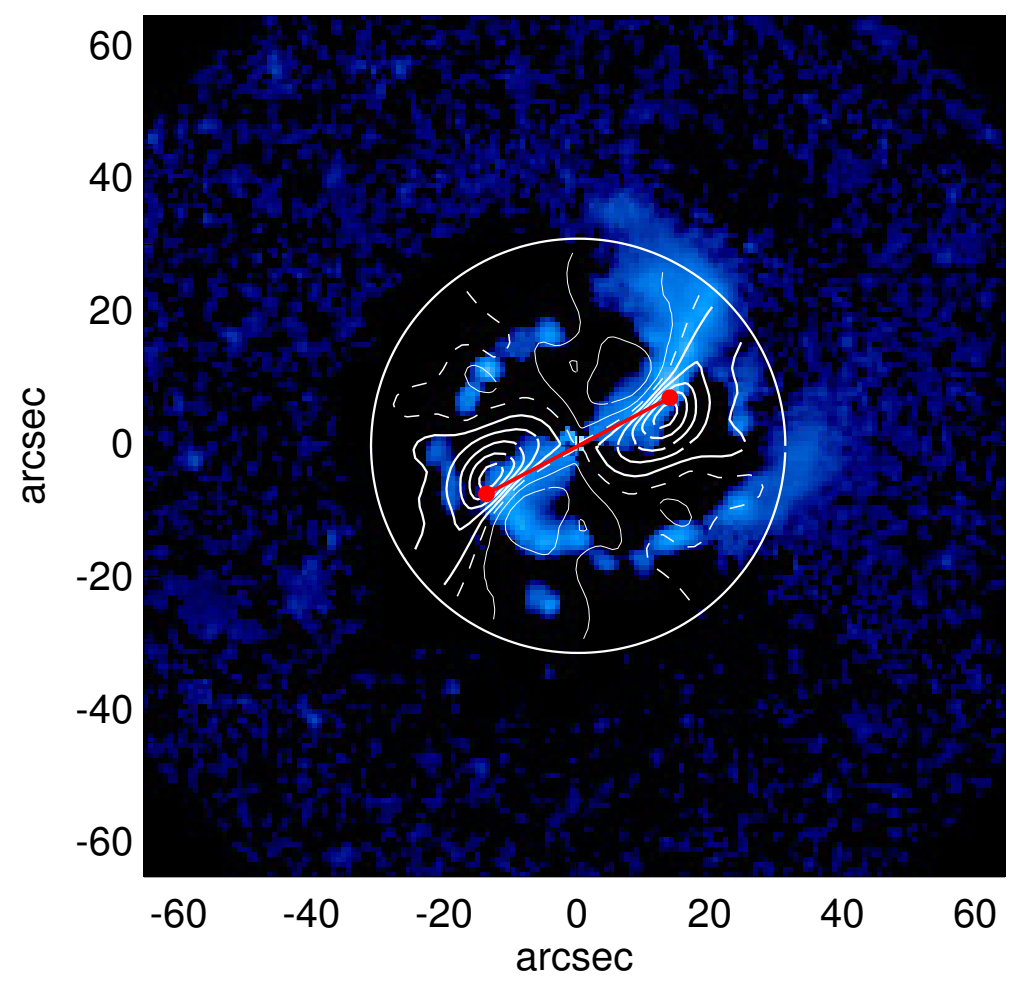
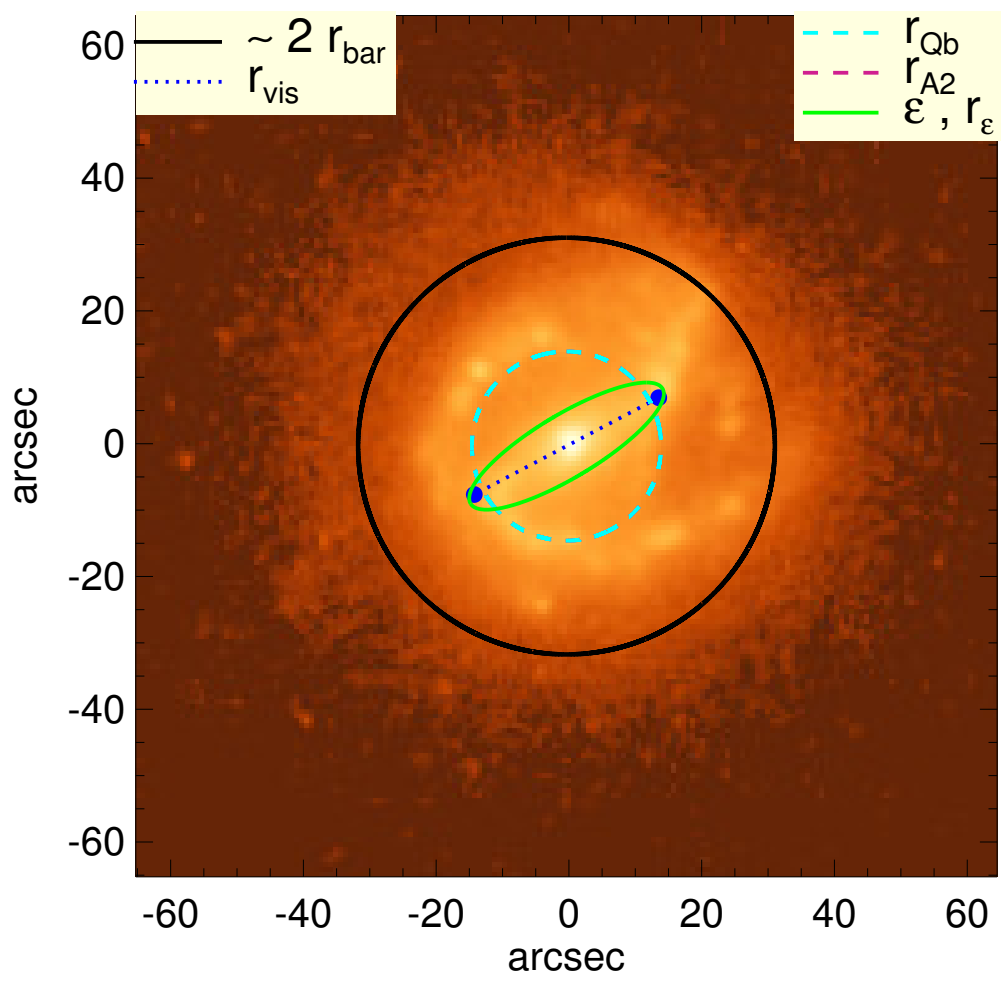


NGC 4412



Q_b : $0.44^{+0.05}_{-0.07}$	A_2^{max} : 0.41
r_{Qb} : 14.2 arcsec	r_{A2} : 14.2 arcsec
$Q_b^{\text{halo-corr}}$: 0.36	$A_2(r_{\text{bar}})$: 0.40
$r_{\text{Qb}}^{\text{halo-corr}}$: 14.2 arcsec	A_4^{max} : 0.20
$Q_b^{\text{bar-only}}$: 0.31	$V_{3.6\mu\text{m}}^{\text{max}}$: $146.5^{+3.1}_{-6.4}$ km/s
$r_{\text{Qb}}^{\text{bar-only}}$: 11.2 arcsec	$r_{3.6\mu\text{m}}^{\text{max}}$: 27.75 arcsec
$(Q_b^{\text{bar-only}})^{\text{halo-corr}}$: 0.27	$V_{3.6\mu\text{m}}(R_{\text{opt}})$: $131.6^{+1.3}_{-3.0}$ km/s
$(r_{\text{Qb}}^{\text{bar-only}})^{\text{halo-corr}}$: 11.2 arcsec	$d_R V_{3.6\mu\text{m}}(0)$: $392.8^{+55.1}_{-75.7}$ km/s/kpc
$Q_T(r_{\text{bar}})$: $0.41^{+0.04}_{-0.06}$	$M_H/M_*(< R_{\text{opt}})$: 1.14
$Q_T^{\text{halo-corr}}(r_{\text{bar}})$: 0.34	a : 9.0 kpc
ϵ : 0.72	V_{∞} : 195.9 km/s

