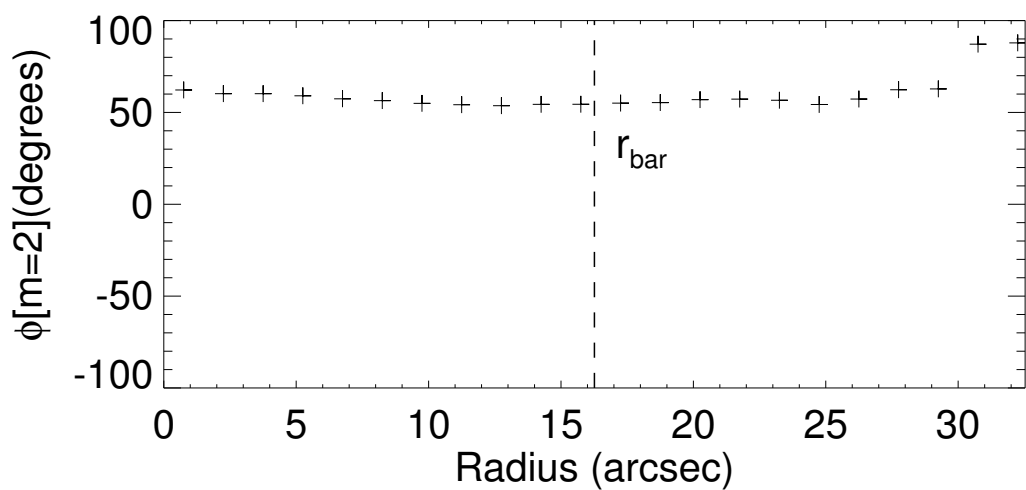
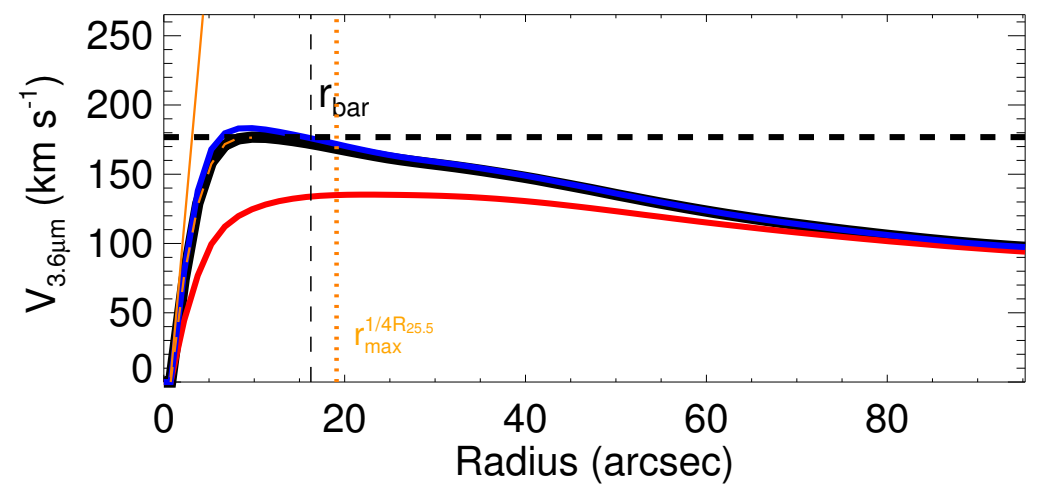
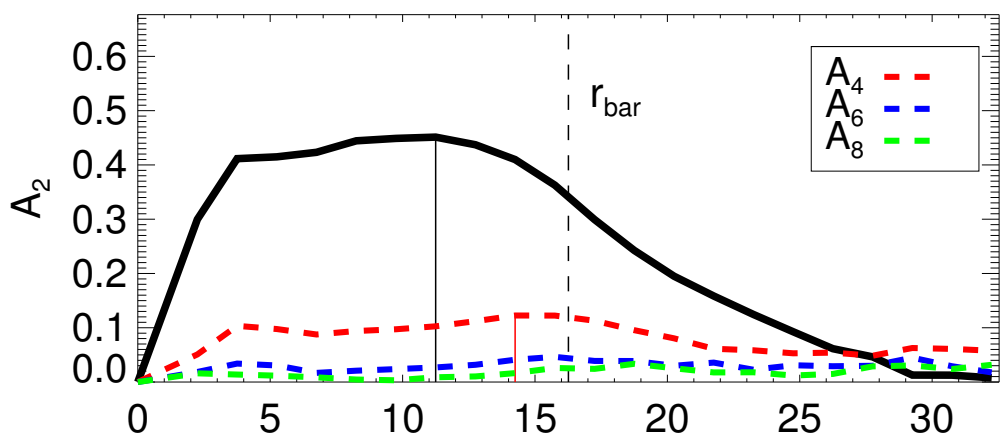
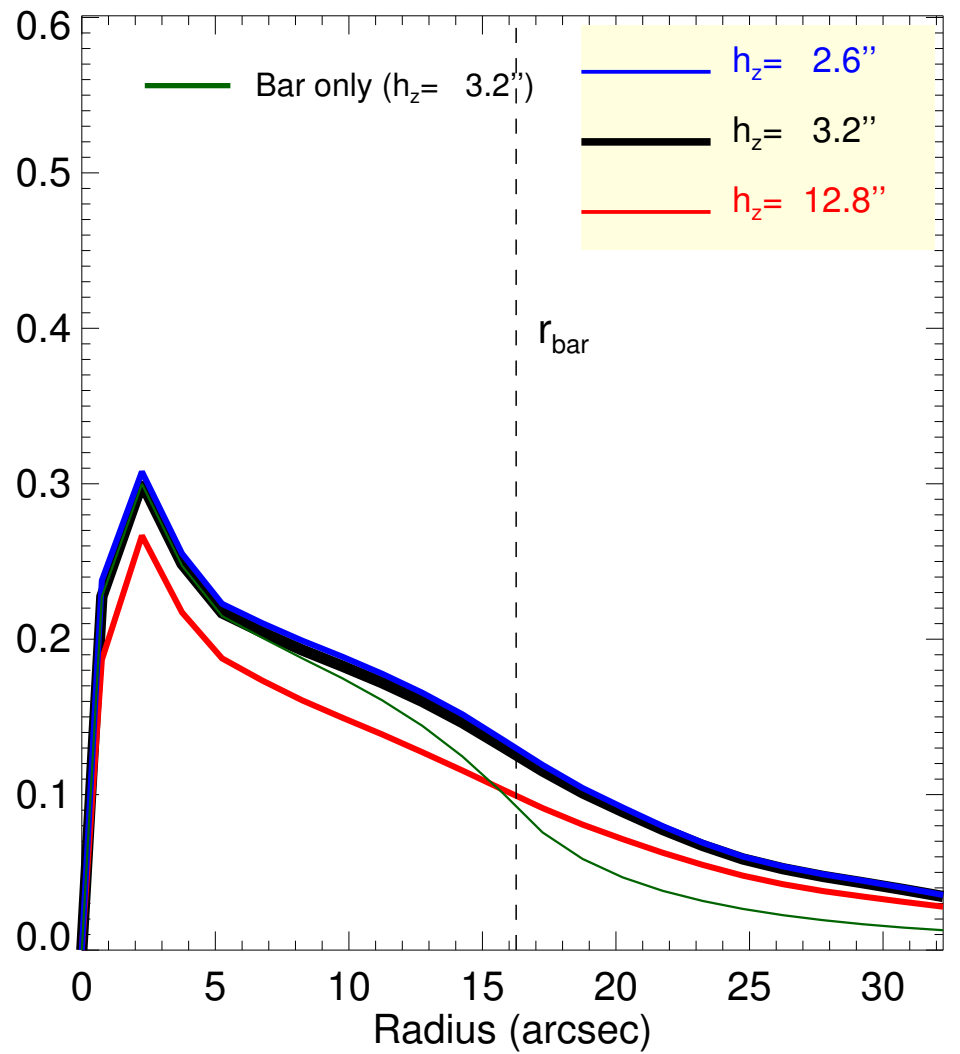
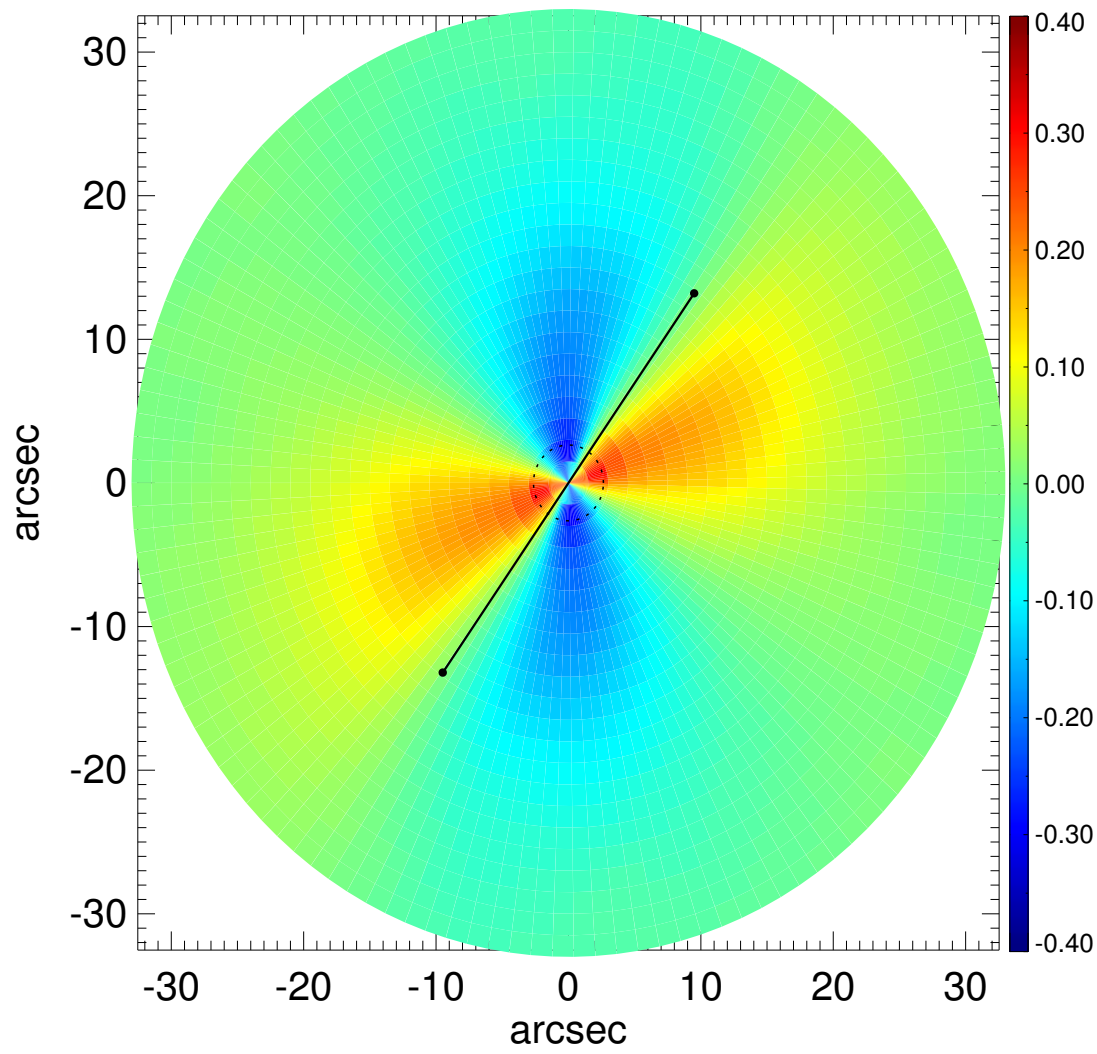
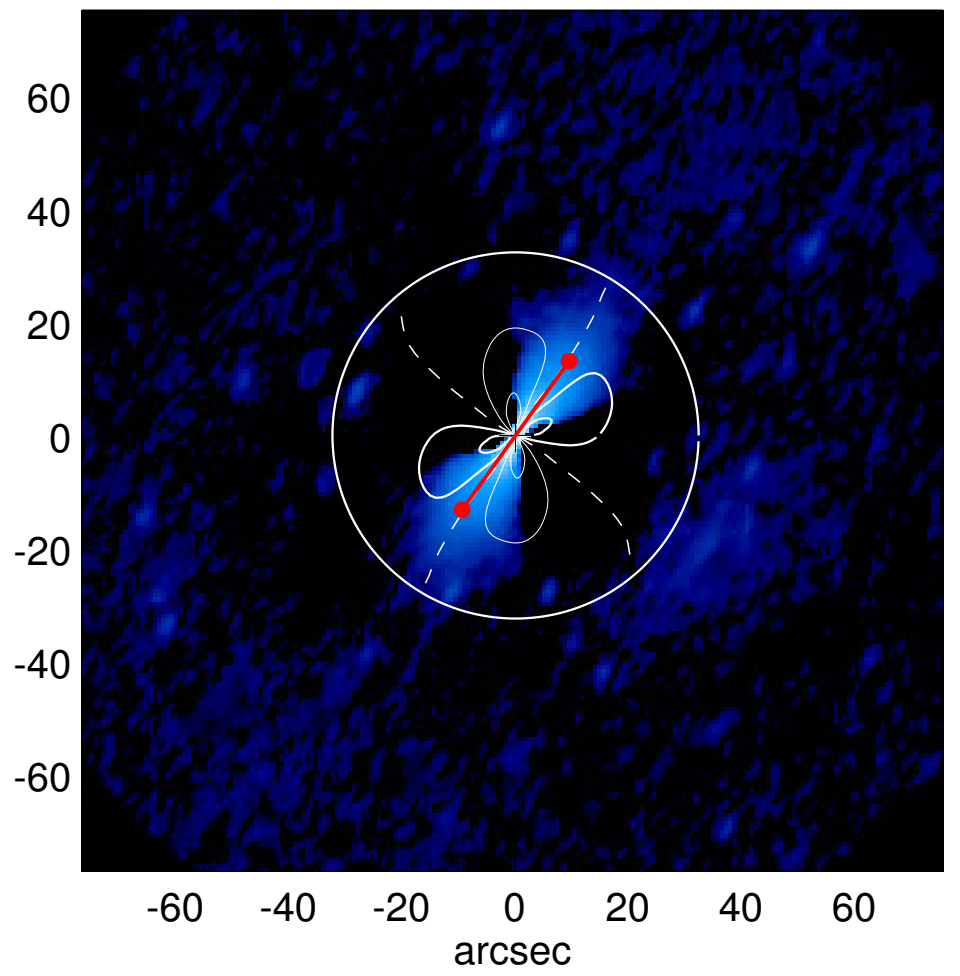
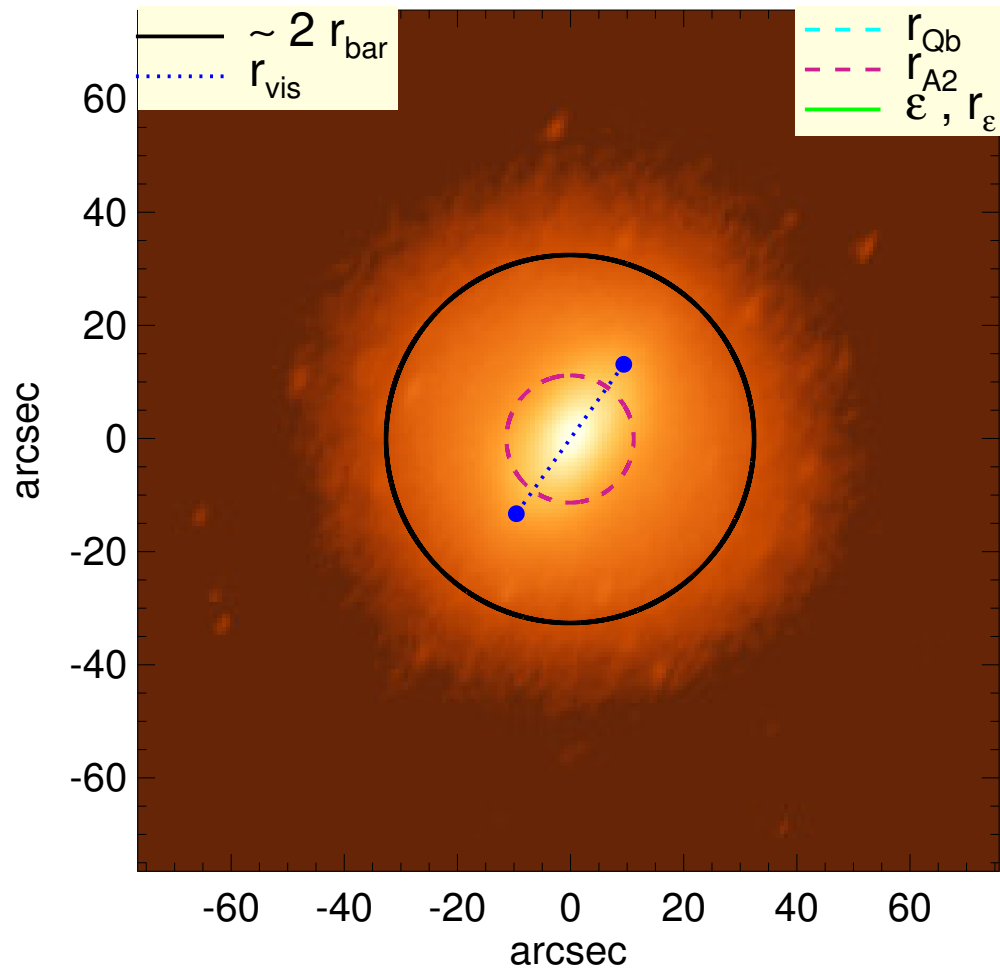


# NGC 5507



$Q_b : \dots$	$A_2^{\text{max}} : 0.45$
$r_{\text{Qb}} : \dots$	$r_{\text{A2}} : 11.2 \text{ arcsec}$
$Q_b^{\text{halo-corr}} : \dots$	$A_2(r_{\text{bar}}) : 0.34$
$r_{\text{Qb}}^{\text{halo-corr}} : \dots$	$A_4^{\text{max}} : 0.12$
$Q_b^{\text{bar-only}} : \dots$	$V_{3.6\mu\text{m}}^{\text{max}} : 176.8^{+6.5}_{-41.5} \text{ km/s}$
$r_{\text{Qb}}^{\text{bar-only}} : \dots$	$r_{3.6\mu\text{m}}^{\text{max}} : 9.75^{+12.0} \text{ arcsec}$
$(Q_b^{\text{bar-only}})^{\text{halo-corr}} : \dots$	$V_{3.6\mu\text{m}}(R_{\text{opt}}) : 142.6^{+1.0}_{-14.9} \text{ km/s}$
$(r_{\text{Qb}}^{\text{bar-only}})^{\text{halo-corr}} : \dots$	$d_R V_{3.6\mu\text{m}}(0) : 439.0^{+39.2}_{-197.8} \text{ km/s/kpc}$
$Q_T(r_{\text{bar}}) : 0.13^{+0.00}_{-0.03}$	$M_b/M_*(\langle R_{\text{opt}} \rangle) : 0.61$
$Q_T^{\text{halo-corr}}(r_{\text{bar}}) : \dots$	$a : \dots$
$\epsilon : \dots$	$V_{\infty} : \dots$