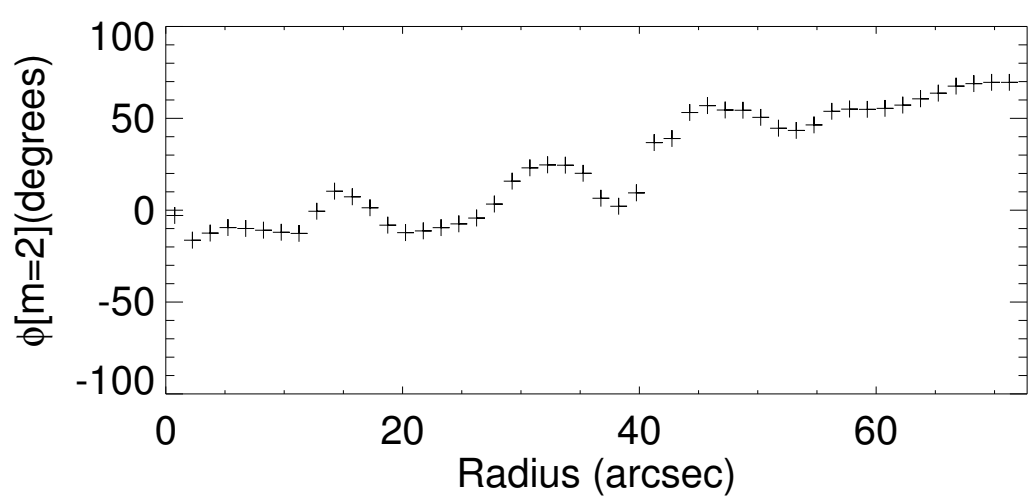
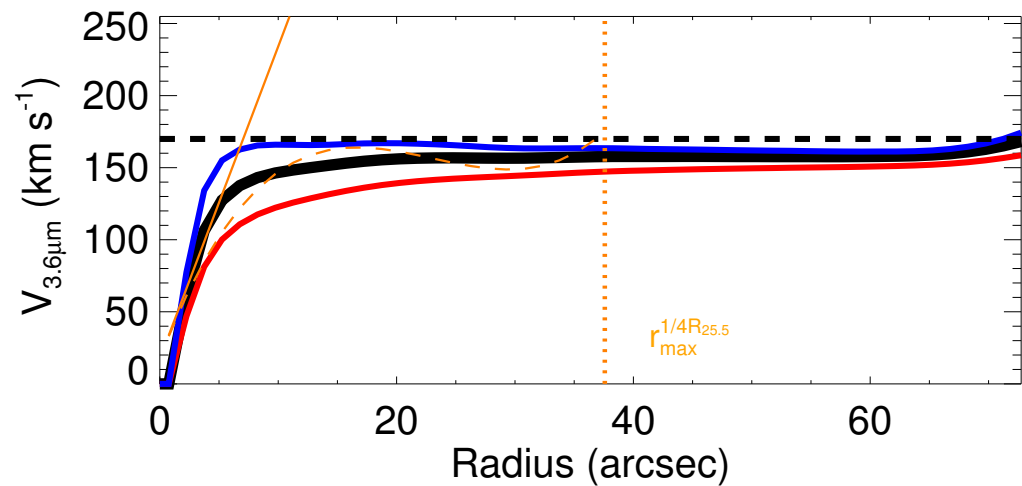
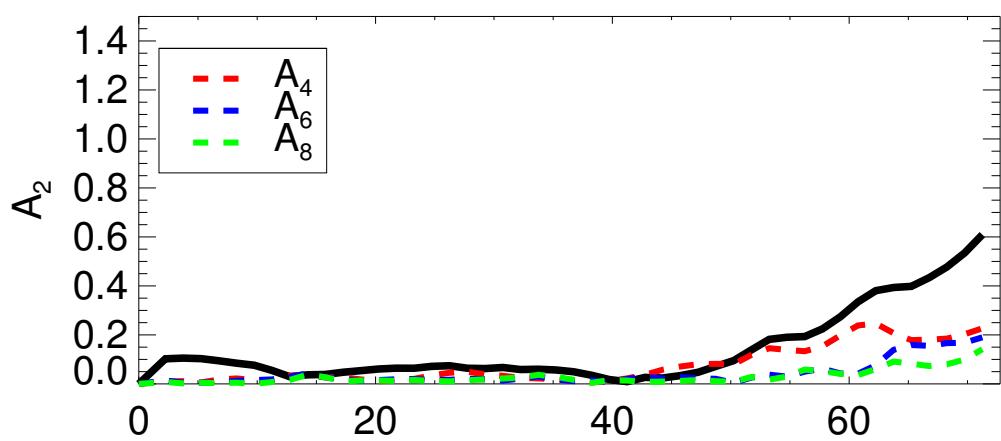
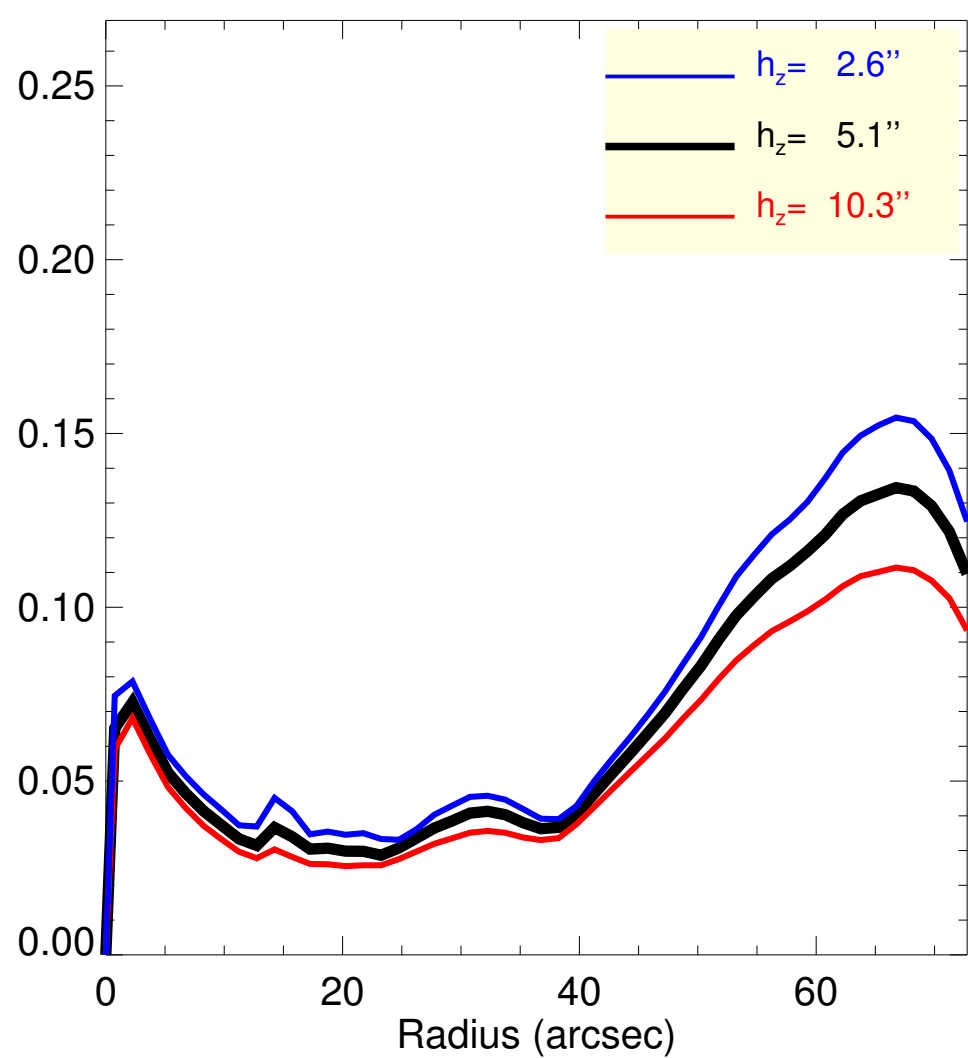
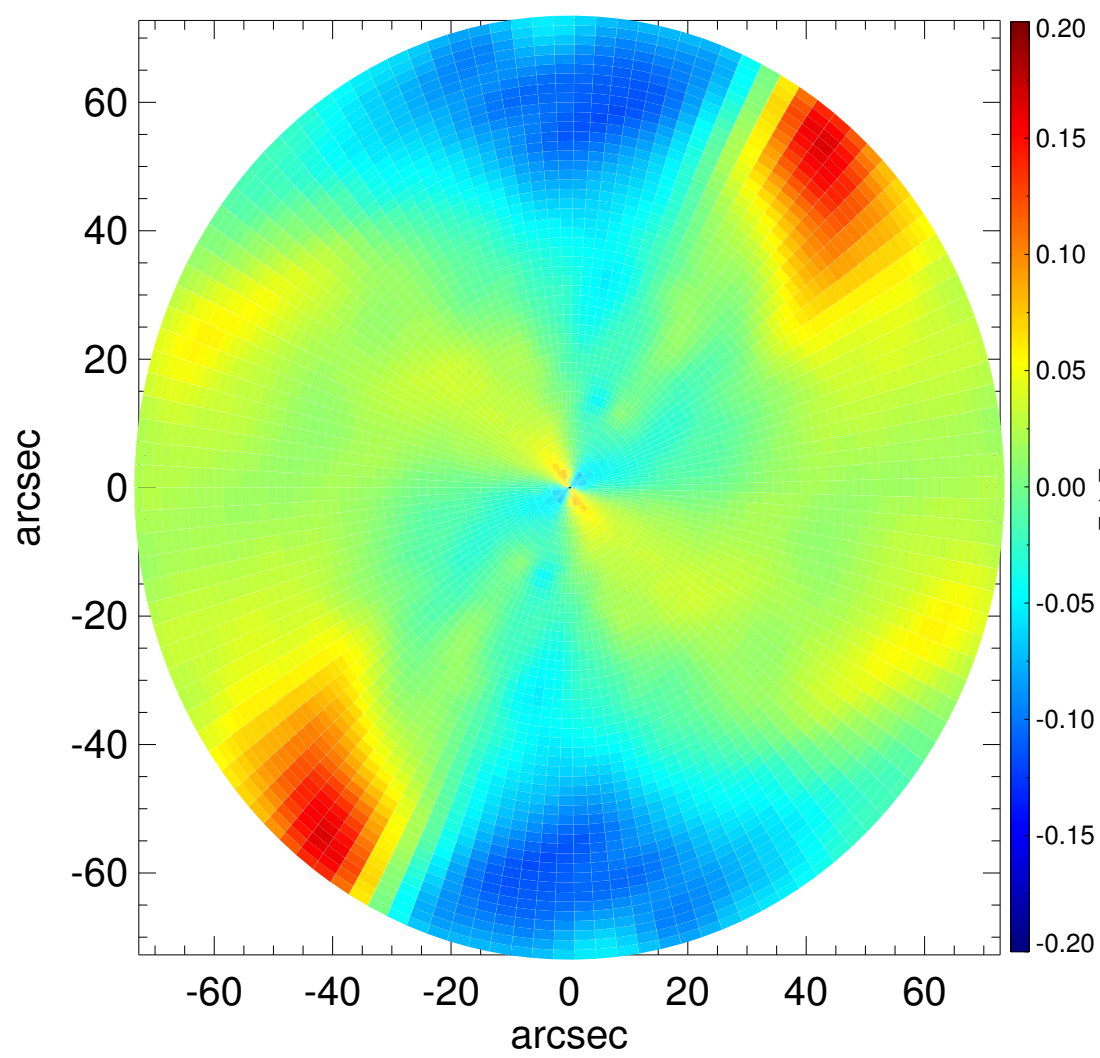
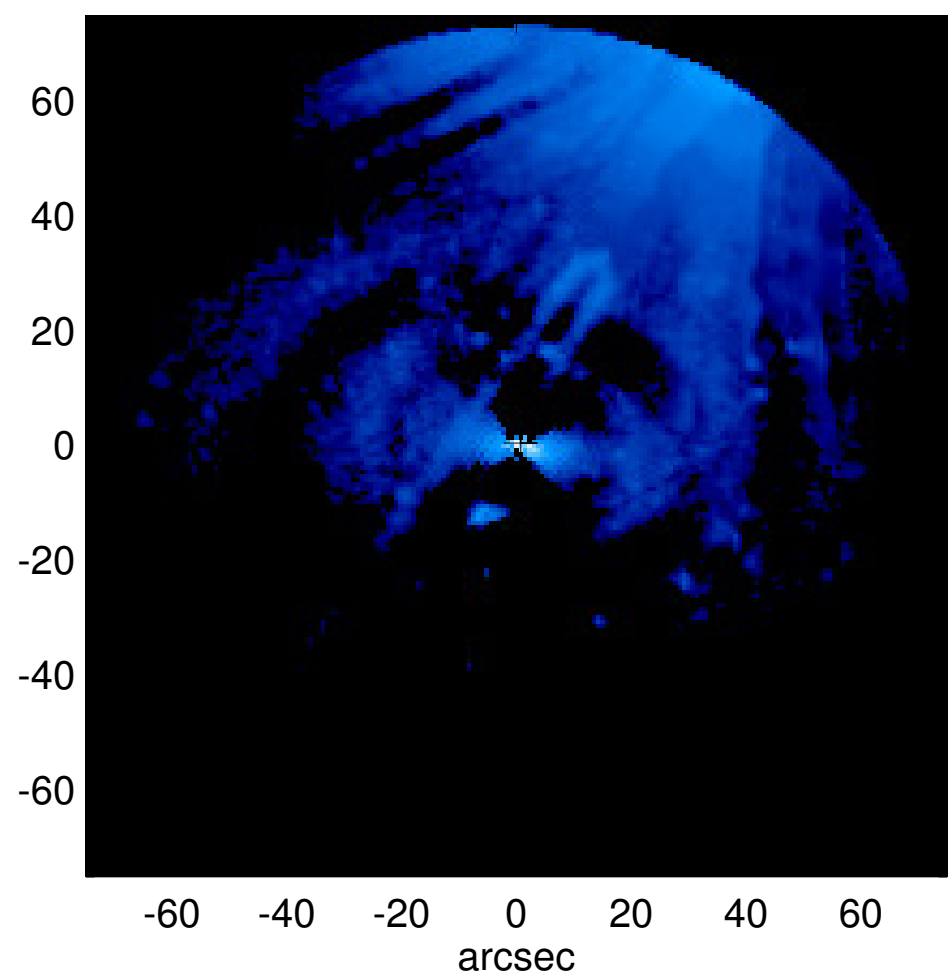
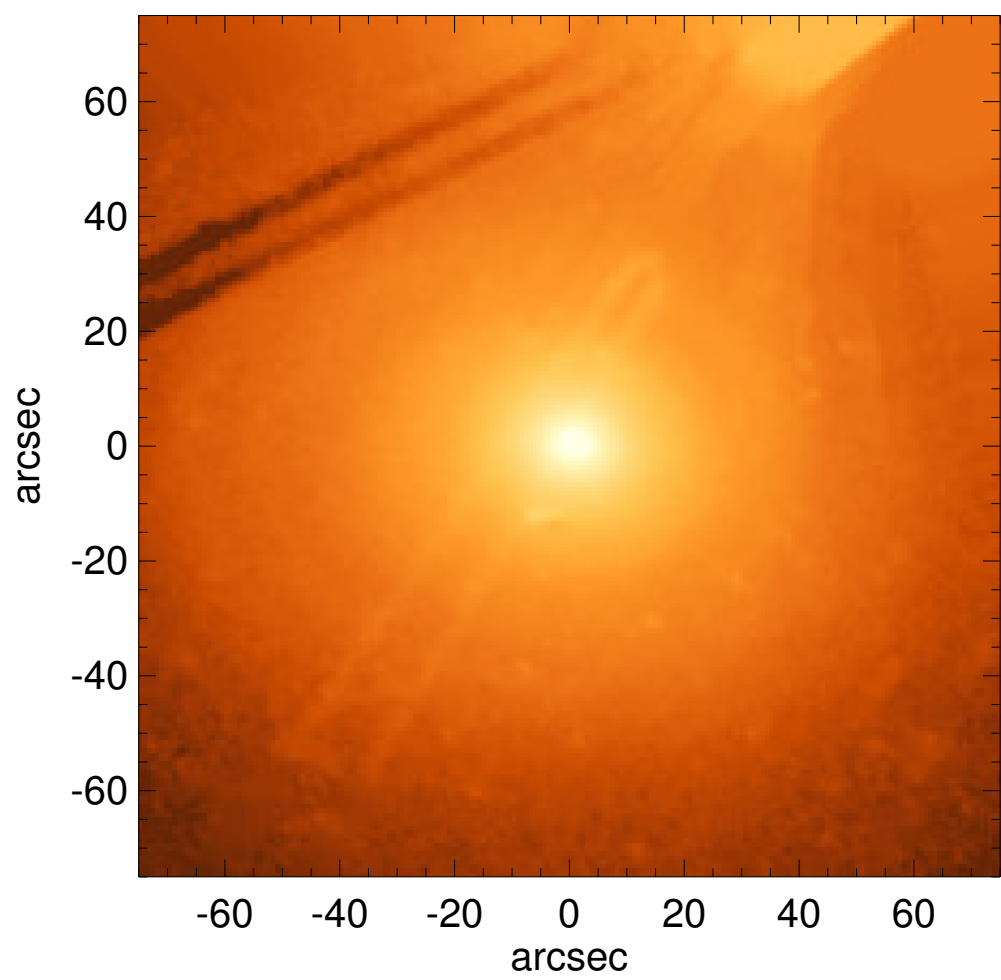


NGC 6340



$Q_b : \dots$
 $r_{Qb} : \dots$
 $Q_b^{\text{halo-corr}} : \dots$
 $r_{Qb}^{\text{halo-corr}} : \dots$
 $Q_b^{\text{bar-only}} : \dots$
 $r_{Qb}^{\text{bar-only}} : \dots$
 $(Q_b^{\text{bar-only}})^{\text{halo-corr}} : \dots$
 $(r_{Qb}^{\text{bar-only}})^{\text{halo-corr}} : \dots$
 $Q_T(r_{\text{bar}}) : \dots$
 $Q_T^{\text{halo-corr}}(r_{\text{bar}}) : \dots$
 $\epsilon : \dots$

$A_2^{\text{max}} : \dots$
 $r_{A2} : \dots$
 $A_2(r_{\text{bar}}) : \dots$
 $A_4^{\text{max}} : \dots$
 $V_{3.6\mu m}^{\text{max}} : 169.9^{+6.2}_{-9.6} \text{ km/s}$
 $r_{3.6\mu m}^{\text{max}} : 72.75$
 $V_{3.6\mu m}(R_{\text{opt}}) : 169.9^{+6.2}_{-9.6} \text{ km/s}$
 $d_R V_{3.6\mu m}(0) : 320.1^{+61.8}_{-66.9} \text{ km/s/kpc}$
 $M_H/M_s(<R_{\text{opt}}) : 1.83$
 $a : 10.6 \text{ kpc}$
 $V_\infty : 451.7 \text{ km/s}$

