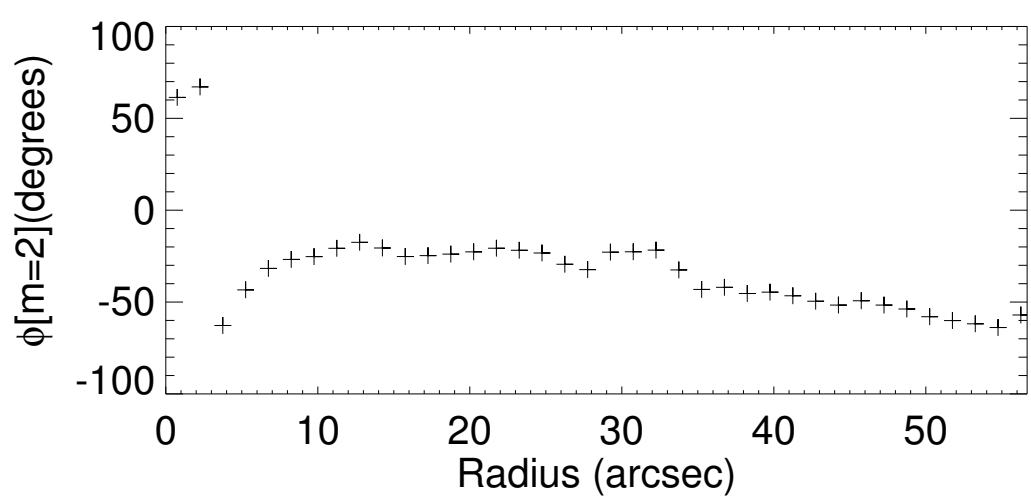
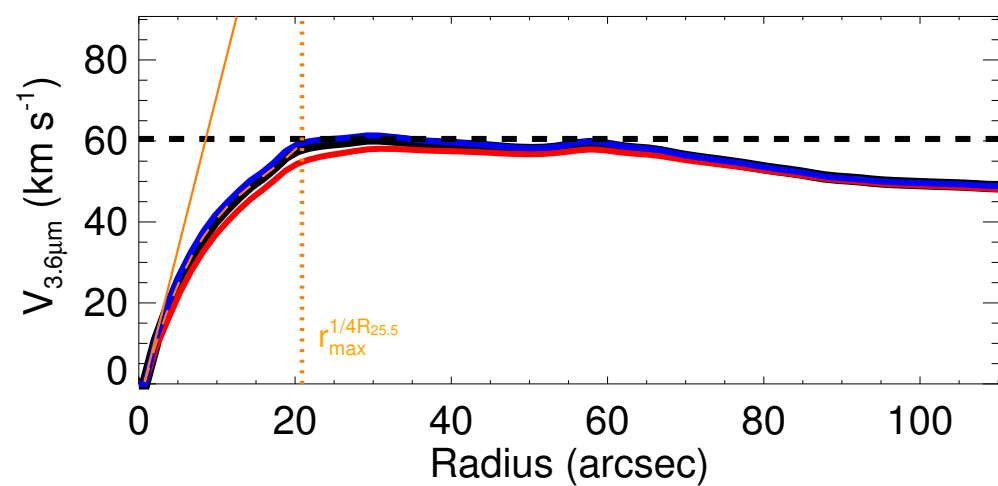
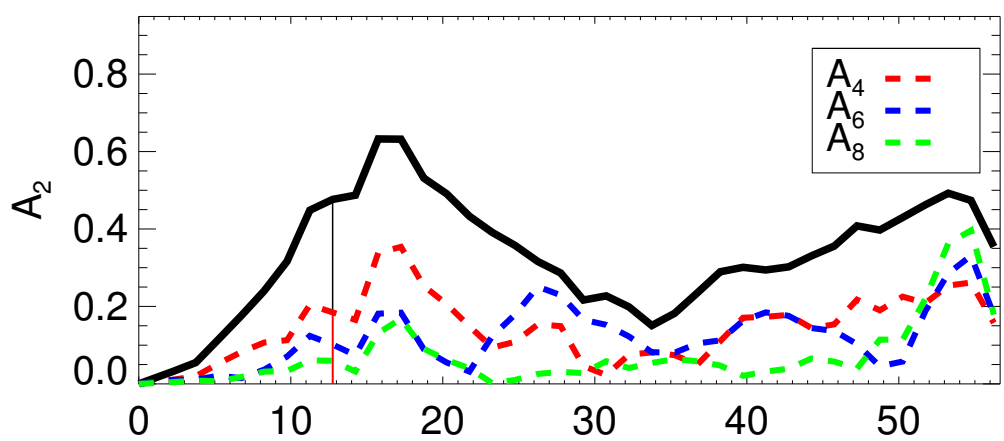
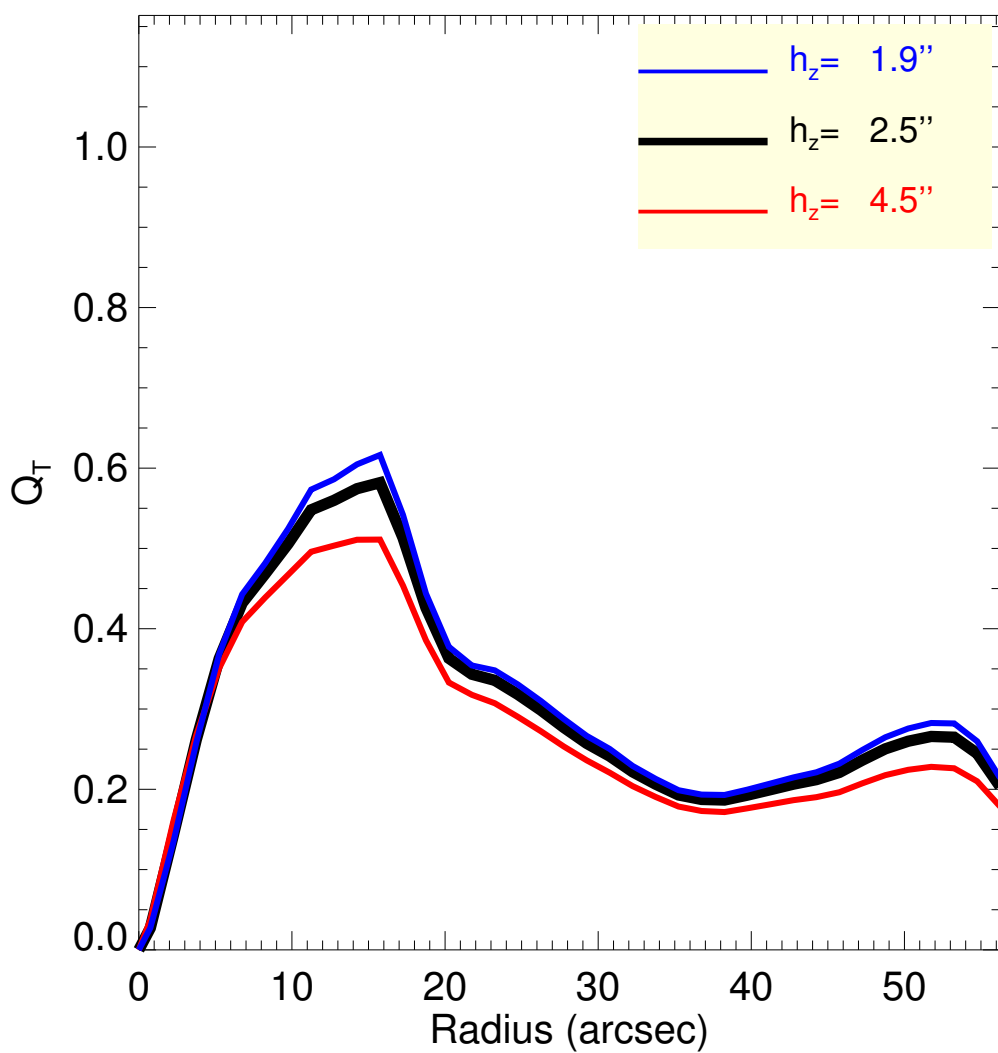
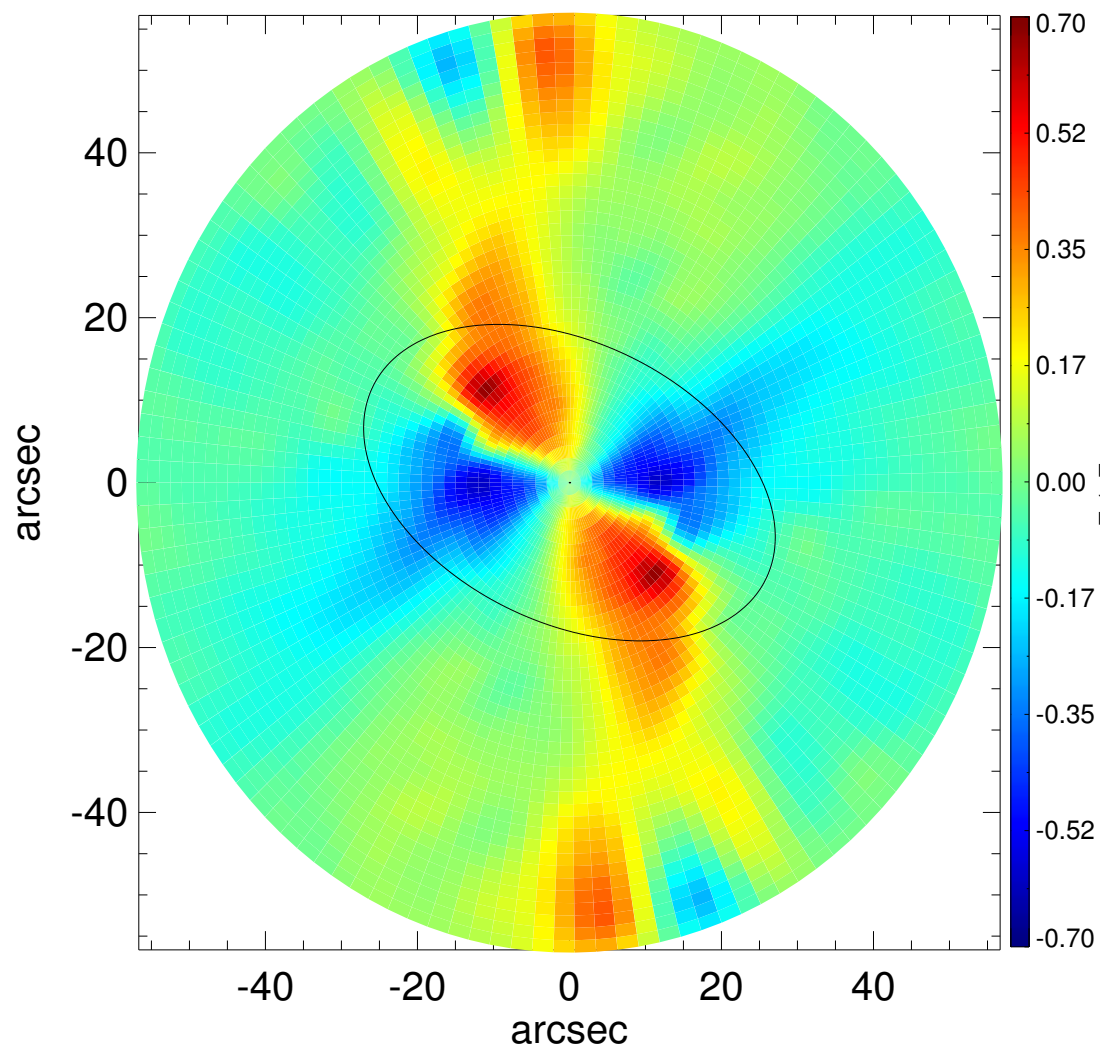
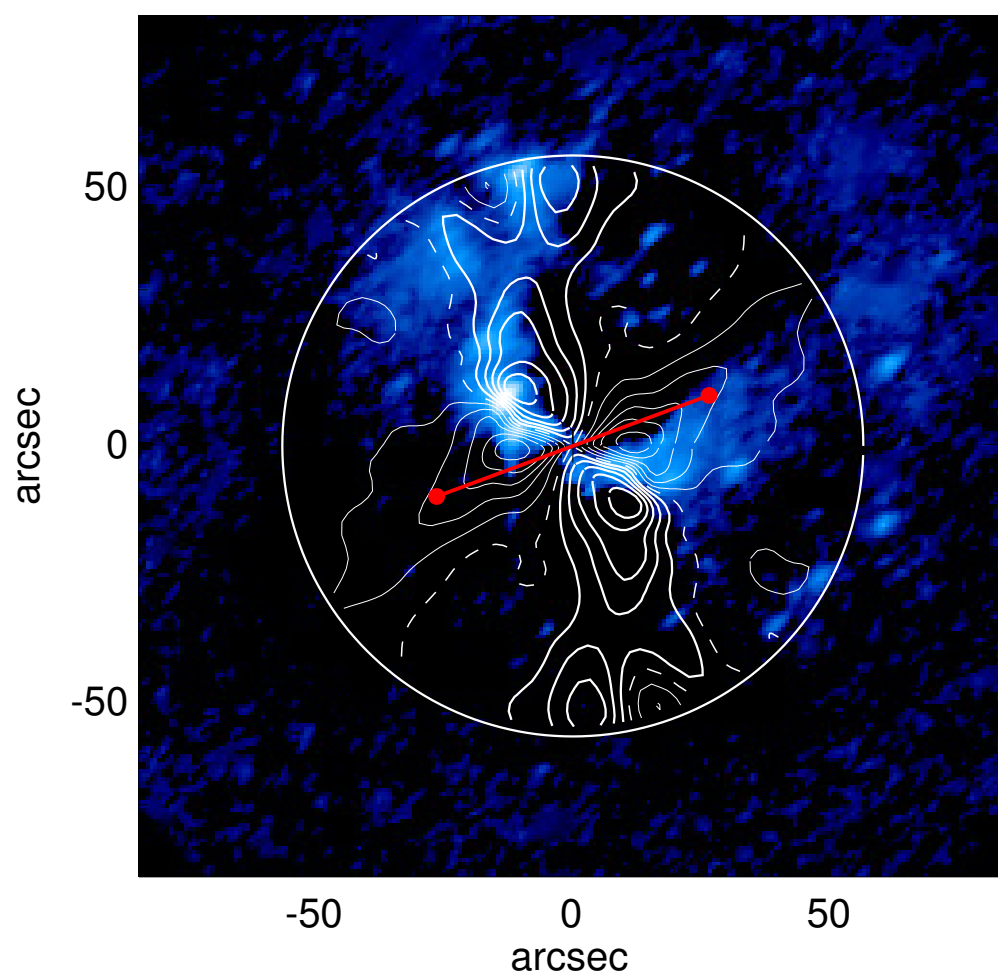
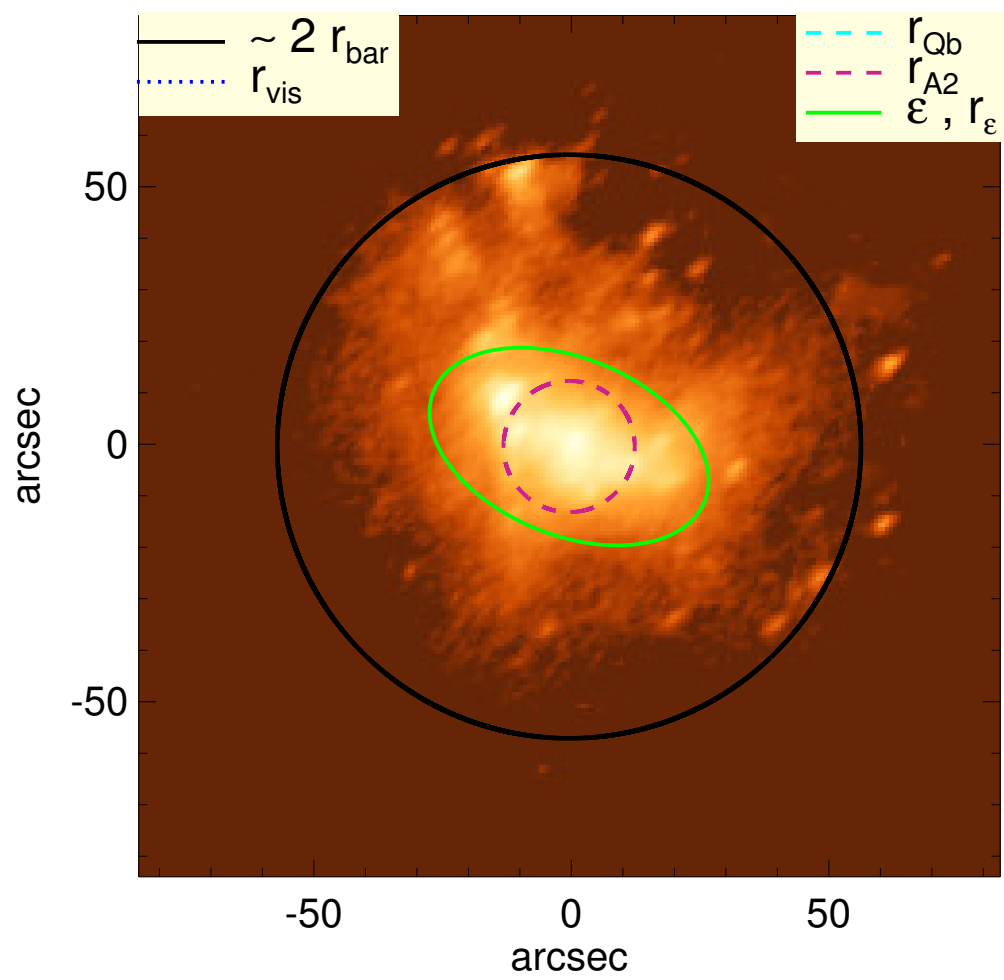


# NGC 7800



$Q_b : \dots$	$A_2^{\text{max}} : 0.48$
$r_{\text{Qb}} : \dots$	$r_{\text{A2}} : 12.8 \text{ arcsec}$
$Q_b^{\text{halo-corr}} : \dots$	$A_2(r_{\text{bar}}) : \dots$
$r_{\text{Qb}}^{\text{halo-corr}} : \dots$	$A_4^{\text{max}} : 0.18$
$Q_b^{\text{bar-only}} : \dots$	$V_{3.6\mu\text{m}}^{\text{max}} : 60.5^{+0.9}_{-2.4} \text{ km/s}$
$r_{\text{Qb}}^{\text{bar-only}} : \dots$	$r_{3.6\mu\text{m}}^{\text{max}} : 30.75^{+1.50} \text{ arcsec}$
$(Q_b^{\text{bar-only}})^{\text{halo-corr}} : \dots$	$V_{3.6\mu\text{m}}(R_{\text{opt}}) : 54.6^{+0.2}_{-0.8} \text{ km/s}$
$(r_{\text{Qb}}^{\text{bar-only}})^{\text{halo-corr}} : \dots$	$d_R V_{3.6\mu\text{m}}(0) : 69.3^{+5.8}_{-11.8} \text{ km/s/kpc}$
$Q_T(r_{\text{bar}}) : \dots$	$M_H/M_s(<R_{\text{opt}}) : 3.30$
$Q_T^{\text{halo-corr}}(r_{\text{bar}}) : \dots$	$a : 8.2 \text{ kpc}$
$\varepsilon : 0.39$	$V_{\infty} : 118.3 \text{ km/s}$

