



# **INFO SESSION** Jan 4 at 14.15

**University of Oulu**

**Student Union**

**Quiet room**

**Library Services**

**Health Services**

**ICT Services**

**Sports at the University**

**Permits (Right for  
Residence in Finland)**

**Finnish ID number**

**Banking in Finland**



**Founded in 1958**

- 14 000 students**
- approx. 860 international degree students**
- 650 exchange students per year**

**3 000 staff**



## 8 Faculties or Schools:

**Biochemistry and Molecular Medicine (FBMM)**  
**Education (Fedu)**  
**Humanities (FHum)**  
**Information Technology and Electrical Engineering (ITEE)**  
**Medicine (FMed)**  
**Science (FSci)**  
**Technology (FTech)**  
**Oulu Business School (OBS)**

**Starting Jan 1, 2018 the Oulu Mining School and Oulu School of Architecture have merged with the Faculty of Technology.**



# International office & exchange matters

Practically all matters concerning your exchange (i.e. signing arrival and exit forms, updating learning agreements, discussing studies etc) are handled at your own faculty. For info on exchange coordinators see [www oulu.fi/external/international/Info sheet.pdf](http://www oulu.fi/external/international/Info sheet.pdf).

Central International office can be reached at [international.office@oulu.fi](mailto:international.office@oulu.fi).

If unsure who to contact or where to go, contact your faculty study affairs



# Faculty study affairs

All Faculties have their own Study Affairs offices, see [www.oulu.fi/university/faculty-study-affairs](http://www.oulu.fi/university/faculty-study-affairs) for information.

This is where you can get a printed transcript, inform you Finnish ID number to etc.

**N.B.** There will be changes in some of the physical locations during the spring term, follow the info.

If unsure where to go or who to contact, email your faculty at

[study.fbmm@oulu.fi](mailto:study.fbmm@oulu.fi)

[study.education@oulu.fi](mailto:study.education@oulu.fi)

[study.humanities@oulu.fi](mailto:study.humanities@oulu.fi)

[study.business@oulu.fi](mailto:study.business@oulu.fi)

[study.science@oulu.fi](mailto:study.science@oulu.fi)

[study.medicine@oulu.fi](mailto:study.medicine@oulu.fi)

[study.itee@oulu.fi](mailto:study.itee@oulu.fi)

[study.technology@oulu.fi](mailto:study.technology@oulu.fi)



## Student Union OYY

Presentation by Asta Salomaa

**Student union fee paid at the fair**

### **Student card:**

Mobile Frank student app, available for Android and iPhone ([//www.frank.fi/en/](http://www.frank.fi/en/)).

The app requires that your payment is registered to weboodi (done Friday at Tellus starting 10am)

App requires a Finnish ID number: a fake ID number is available in weboodi and in your SoleMOVE account.

When you inform your real Finnish ID number to your faculty the app will require a re-login.



## 24 / 7 Campus

Students are able to get a personal campus access card (cost 20eur) that gives access 24/7 to campus premises, Tellus Innovation Arena and Pegasus library.

For more information see <http://www oulu.fi/university/nod e/47443>

Purchase the card at <https://shop oulu.fi/>



# Right for Residence in Finland

EU students: register your stay online at [http://www.migri.fi/eu\\_registration](http://www.migri.fi/eu_registration)

Registration necessary if you stay for over three months. Requires also a visit at the Immigration office downtown. You can also apply for the Finnish ID number at the same time i.e. would not need a separate visit to the Register office (see next slide).

Nordic students staying over 6 months: registration at local Register Office. Address: Isokatu 4, open Mon-Fri 6.00-16.15

Non-EU students: should have applied for residence permit already in your home country.

Finnish Immigration Service  
[www.migri.fi](http://www.migri.fi)





# Finnish ID number

All international students must get a Finnish ID number and inform it in person to their own faculty's study affairs within two weeks after arrival.

**Local Register Office:**

**Address: Isokatu 4, 90101 OULU,  
open Mon-Fri 9.00-16.15**

**Documents needed for the registration are:**

- Study certificate (you get this on Friday)
- Passport (or other official ID)
- Residence permit card (if applicable)
- ID Number application form (available at the Register office)

**N.B. If you have a residence permit card the ID number is most likely already available at the back of it → inform it to study affairs.**



# Insurance

- If you do not have an insurance to cover accidents, get one!
- You are not insured by the University of Oulu.
  
- Slippery roads, biking, snow sports – accidents may happen!
- Make sure you know your insurance coverage – not all cover for example winter sports such as skiing or skating. The coverage should also extend to your personal belongings/housing.



# Study certificate

**Get this in Friday starting at 10.00am in Tellus. Present your ID and receipt of student union payment.**

**You will need it for example to prove your student status on campus, when EU students register their stay in Finland and when getting a bus card (if over 24).**

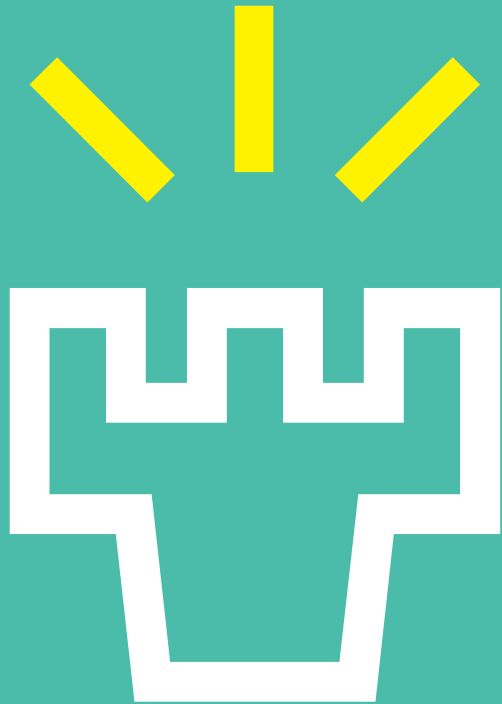


## Banking in Finland

Opening a bank account is easy and free of charge. Visit one of the main bank branches in downtown Oulu (ask your kummi for help). The bank might require you to reserve a time for the opening or it might open the account immediately. Have your passport and residence permit (non-EU students) with you.

EU students: do you really need to open an account? You can pay bills from your home country's bank with SEPA codes!

**N.B. Banks closed Jan 4-5, 2018!**



**UNIVERSITY  
OF OULU**

**Libraries**  
[www oulu fi /library](http://www oulu fi /library)

**Libraries arrange 'Library ABC'  
orientation sessions**

**Ask your kummi to book a  
session for your group!**



# Health Services



Finnish Student Health Service  
Linnanmaa Campus  
Address: Yliopistokatu 1 A

<http://www.fshs.fi>

[http://www.yths.fi/en/contact\\_details/units/oulu](http://www.yths.fi/en/contact_details/units/oulu)

For Bachelor and Master's level students who are members of the Student Union

## **Free of Charge**

- **GPs**
- **Laboratory examinations with a referral from an FSHS doctor**
- **X-ray examinations with a referral from an FSHS doctor/dentist**
- **Appointment for mental health**



# Health services

## *Subject to charge*

- **Specialist (not appointments of psychiatrists) 24 euros**
- **Dentist/Specialised dentist 18-32 euros**
- **PENALTY FEE TO BE PAID IF YOU HAVE NOT CANCELLED YOUR APPOINTMENT IN DUE TIME (penalty fee for no-show appointments 35 euros)**



# Health Services

**EMERGENCY NUMBER 112**

**Oulu University Hospital  
emergency unit:**

**[https://www.ppshp.fi/channels/emergency\\_duty/102/3](https://www.ppshp.fi/channels/emergency_duty/102/3)**

**Street address:**

**Kajaanintie 50, 90220 Oulu**

**You are entitled to treatment  
with the European Health Card**

**We highly recommend a  
personal insurance from your  
home country!**





# Quiet room in Linnanmaa Campus

**Location: YTI01 (close to L3)**

**The room is available for all university students and staff members for meditation and for spending a quiet moment**

**Not intended for studying or working**

**Open 7am-10 pm on weekdays**



# ICT Services

<http://www.oulu.fi/ict/students>

Email: [neuvonta\(at\)oulu.fi](mailto:neuvonta@oulu.fi)

Update your information in weboodi:  
check your address and e-mail,  
these need to be correct at all  
times.

- User IDs & e-mail O365
- User-ID and password
- [Firstname.lastname@student.oulu.fi](mailto:Firstname.lastname@student.oulu.fi)
- You have received the user ID and password in advance. Problems?  
Email: [neuvonta\(at\)oulu.fi](mailto:neuvonta@oulu.fi) OR Visit ICT Helpdesk



# ICT Services

## ICT Helpdesk

- open **Mon-Fri 9-15** in room **KK241** (corner of **Kauppakatu** and **Väylä** on the **2nd floor**)
- **neuvonta(at)oulu.fi**
- **CHAT** available through **ICT's webpages**

- **PanOulu Wireless Network** (open network)
- **EduRoam Wireless Network** on campus (login required)
- **Tuudo student app** – start using immediately



# ICT Services - Printing

- <http://www.oulu.fi/ict/printing>
- **Your printing quota per term: 4€.**  
You can purchase more quota if necessary.
- **get a printing sticker** (available through ICT helpdesk or main lobby info point)
- **Activate your sticker according to instructions, it is connected to your UniOulu account**
- **Canon devices around campus can be used for all printing, copying and scanning.**



# University Sports

[www.unisportoulu.fi](http://www.unisportoulu.fi)

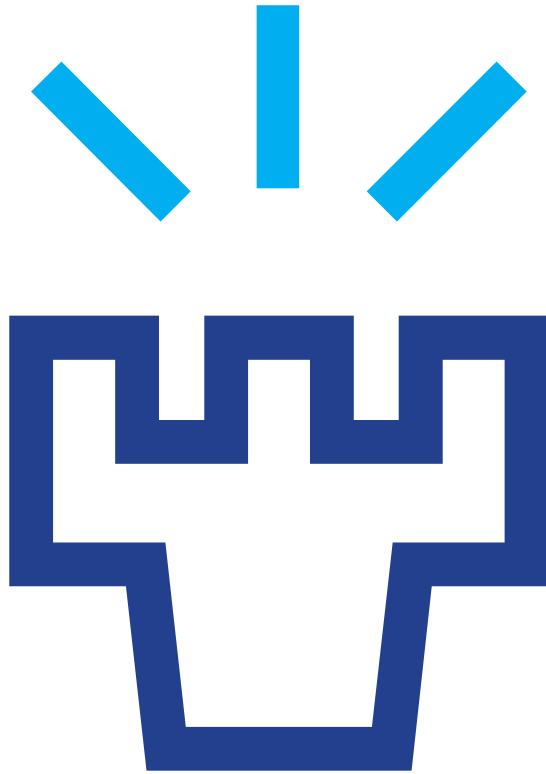
- Football, floorball, basket ball, dance, martial arts, climbing, skiing, ice-hockey, paddling, orienteering, disc golf, rugby, volley ball, palm ball, dance, yoga, taiji, nia etc.
- Purchase Sports Pass at the Student Union OYY office for 3 Eur or have it as a Cardu mobile app by purchasing it through [shop.oulu.fi](http://shop.oulu.fi)



## Bus Pass

**You can buy monthly bus passes at  
- Oulu I 0 office (address: Torikatu 10).**

**If you are over 24 years, take Study  
certificate with you.**



**UNIVERSITY  
OF OULU**