



### Nallikari beach

- 5.5 km to Oulu city centre
- 15 mins by car or taxi (about 15 euros)
- 18 minutes by bus No. 15 (3.30 euros)

Hotels Pohto and Eden

Oulu city centre

Hotels Arina and Cumulus

Oulu train station

- 6h by train from Helsinki

Niemenranta

- 1h by air from Helsinki

Oulu airport

- 20 km to Oulu city centre
- 20 mins by car or taxi (35-40 euros)
- 30 mins by bus No. 8 or 9 (5.80 euros)

Oulun  
lentoasema

### Nallikari beach

- 5.5 km to Oulu city centre
- 15 mins by car or taxi (about 15 euros)
- 18 minutes by bus No. 15 (3.30 euros)

Eden

Pohto and the venue

Pohto Oy

Hietasaari

Sokos Hotel Arina

Cumulus

Oulu city centre

Vihreäsaari

Oulun

Kajaanin

Paulaharjuntie

Bertel Jungin tie

8156

20

Valtatie

8156

8156

Kasarmintie

Uusikatu

Kea

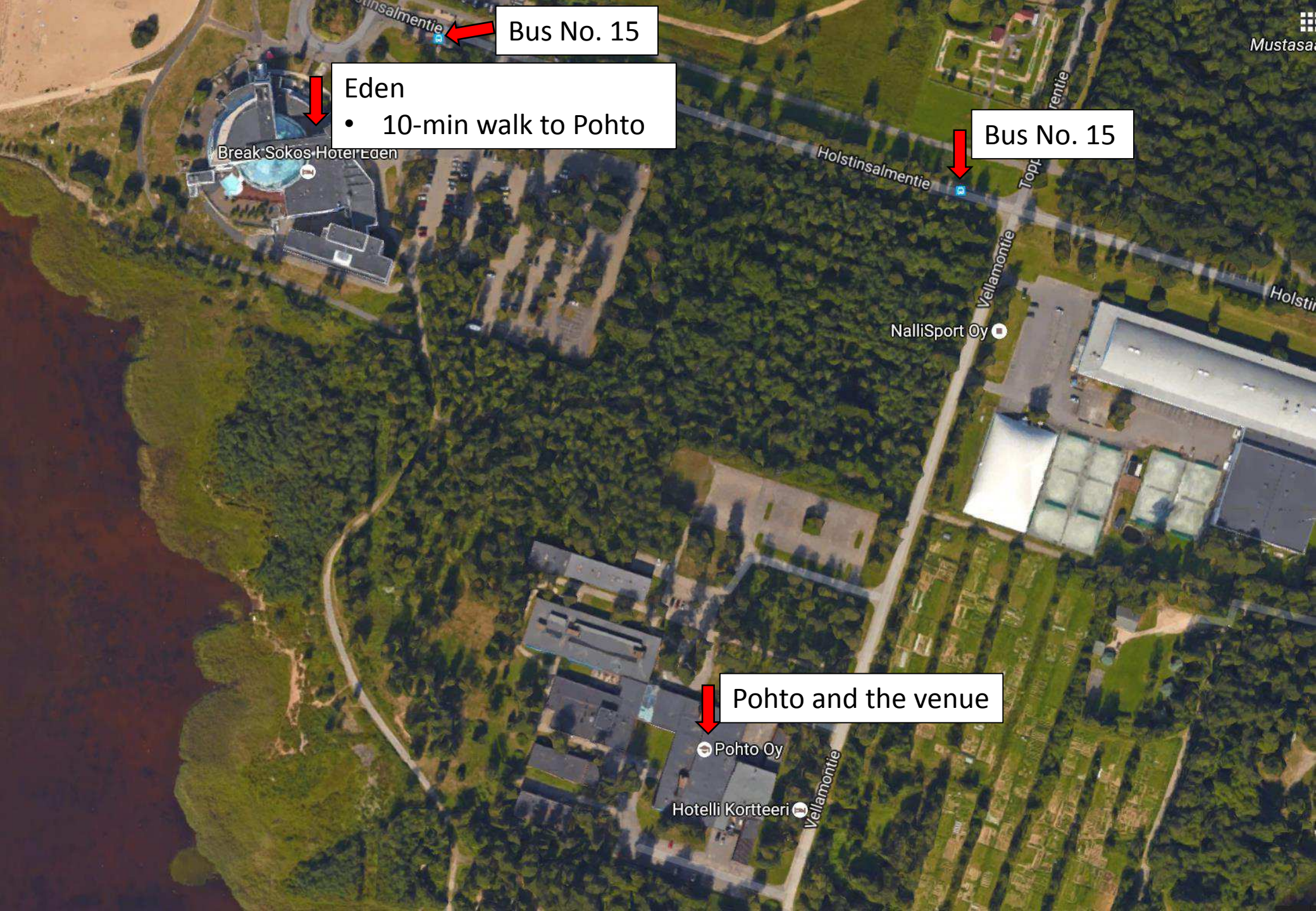


Bus No. 15

Eden  
• 10-min walk to Pohto

Bus No. 15

Pohto and the venue



Break Sokos Hotel Eden

NalliSport Oy

Pohto Oy

Hotelli Kortteeri