

# **WebOodi and Personal Study Plan (PSP)**

**Friday 13<sup>th</sup> March 2020**

**Teemu Pennanen**



## WebOodi

– *The OFFICIAL study database*

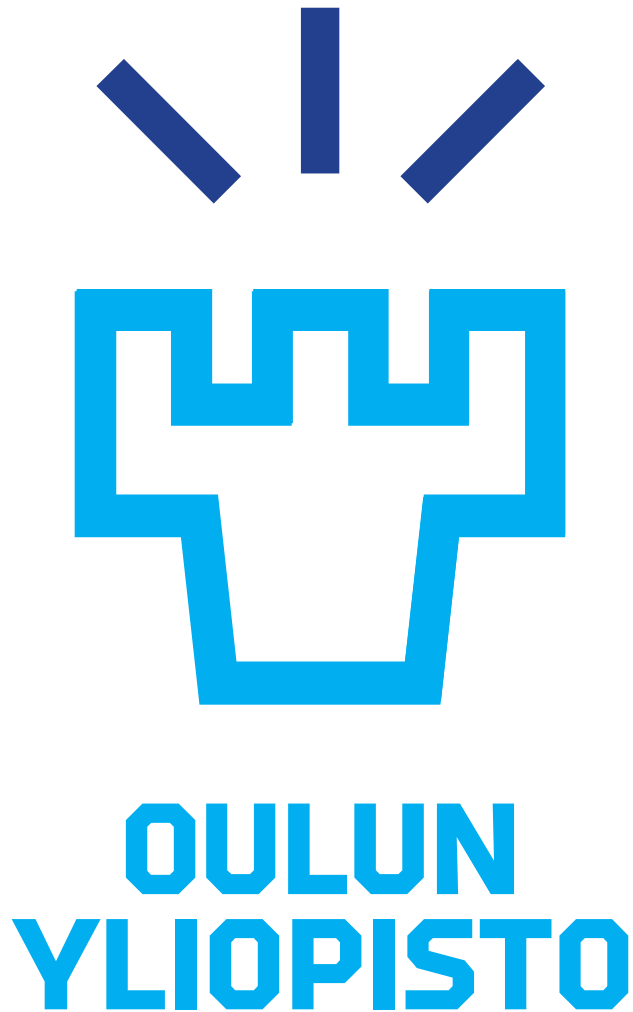
”If it is not in Oodi, it does not exist”

- <https://weboodi oulu.fi/oodi/>



## What can you do in Oodi?

- follow received credits
- make a personal study plan (Oodi-PSP)
- view information and register for courses and exams
- order a transcript of the records
- update your contact information
- General guidelines how to use Oodi:  
<http://www oulu.fi/oodienglish/students/student-guides>



## The PSP (Personal Study Plan)

- The Personal Study Plan (PSP) is part of the Doctoral Training Plan (DTP).
- In your PSP, you'll plan all the courses/studies you will take during your doctoral studies (PSP can be updated along the way).
- PSP is done electronically in Weboodi, with instructions [https://www.oulu.fi/sites/default/files/content/UniOGS\\_PSP\\_QuickGuide.pdf](https://www.oulu.fi/sites/default/files/content/UniOGS_PSP_QuickGuide.pdf)



# General study structure for the doctoral degree

STUDIES

## GENERAL & TRANSFERABLE SKILLS STUDIES:

- Maximum number depends on the doctoral degree programme (up to 15 ECTS)

### Obligatory studies (4 credits) defined by UniOGS:

- Introduction to Doctoral Training (1 credit),
- Scientific Research and Ethics (2 credits),
- Follow-up group reporting & meetings (1 credit)

## FIELD-SPECIFIC STUDIES:

### Obligatory studies (4 credits) defined by UniOGS :

- Doctoral training plan (DTP; 3 credits)
- Seminar (1 credit)

## TEACHING , max. 5 ECTS

Depending on the doctoral degree programme, a doctoral student may include teaching in his/her degree.

Prerequisite: *University Pedagogy for doctoral students (2 ECTS) course!*

- **8 ECTS** are defined **obligatory** for all doctoral students

- **TOTAL 20 – 50 ECTS** depending on Doctoral Degree Programme

- Study requirements for your **doctoral degree programme**, please see

<https://www oulu fi/uniogs/studyrequirements>



## GENERAL & TRANSFERABLE SKILLS STUDIES

- Courses that improve skills required basically everywhere, like presentation skills, project management, etc.
- UniOGS provides an extensive range of courses of this type. The upcoming courses are communicated directly to the PhD Students' email list every semester.
- General info about the courses from <https://www oulu.fi/uniogs/courses>

## FIELD-SPECIFIC STUDIES

- Courses that help you do your research
- Talk with your principal supervisor which courses would be useful
- Post-graduate or advanced courses (with **J-** or **S-** included in the WebOodi course code)
- Arranged by research units, or doctoral programmes
- Check your own doctoral programme's webpages for topical courses from <https://www oulu.fi/uniogs/dp>  
(choose your own Doctoral Programme and its 'Calendar of Events')



## Doing PSP: In which category a certain activity belongs: in general & transferable skills studies or in field-specific studies?

### Some examples...

General & Transferable studies	Field-specific studies
<i>Learning a skill that can be applied (almost) everywhere</i>	<i>Requiring specific knowledge from your own field</i>
Presentation Skills course	Conference: poster/oral presentation
Scientific Communication/How to Write a Research Plan course	Doctoral training plan
Pedagogy course(s)	Teaching activity
Project Management course	Co-supervision of pro-gradu thesis work
IPR in Research course	Authoring articles (not incl. in thesis)



## Doing PSP in WebOodi:

- For technical guidance, please see [https://www oulu.fi/sites/default/files/content/UniOGS\\_PSP\\_QuickGuide.pdf](https://www oulu.fi/sites/default/files/content/UniOGS_PSP_QuickGuide.pdf)
- The obligatory courses/study attainments defined by UniOGS (DTP, etc.) appear automatically in every PSP (no need for a student to add them).
- The most frequent correction needed is when some course is placed in the wrong category (general & transferable vs. field-specific). Solution: removing the course and adding it to the other category.
- Some other frequent corrections:
  - Too few study credits planned. Solution: add more courses. You can check the requirements from <https://www oulu.fi/uniogs/studyrequirements>
  - Too many A- or P-level courses included in PSP. Primarily only S- or J-level courses are allowed (some doctoral degree programmes allow a small number of A- or P-level courses). Solution: remove some of A- or P-level courses.





# Including teaching activity in the PSP

## ***Transferable skills component***

- Teaching tasks can be included in the degree if your doctoral degree programme allows them and if you have passed a University-level Pedagogy course of at least 2 ECTS (this must be identified in the HOPS).
- UniOGS offers a 2-credit University Pedagogy course (920005J). This course is considered to be a ***Transferable Skills*** course.

## ***Field-specific component***

- Teaching activity is considered to be a field-specific activity.
- Up to 5 ECTS may be allowed for teaching activities (depends on the doctoral degree programme).



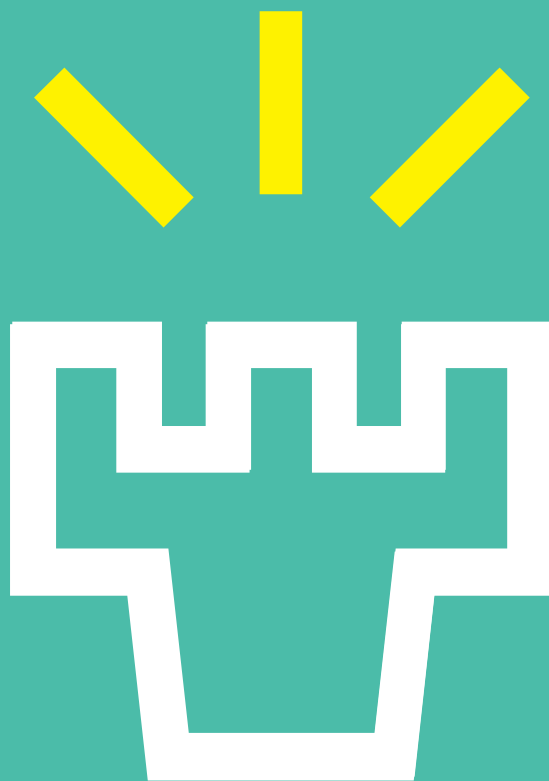
**Recommendations of ECTS for different activities related to doctoral studies, please see**

**[https://www oulu fi/uniogs/recommendations\\_of\\_ects](https://www oulu fi/uniogs/recommendations_of_ects)**

- **Conferences**
  - **Research visits**
  - **Teaching**
  - **Etc.**
- Your principal supervisor can accept credits for these.

**General rule of thumb:**

- **1 ECTS credit corresponds to 27 h work (incl. own work).**



**OULUN  
YLIOPISTO**