

Utilising of PKI in UNIV laptops of the staff

In this instruction it is told how to utilise the certificate of the device in A) [VPN client](#) and B) in [eduroam connection](#).

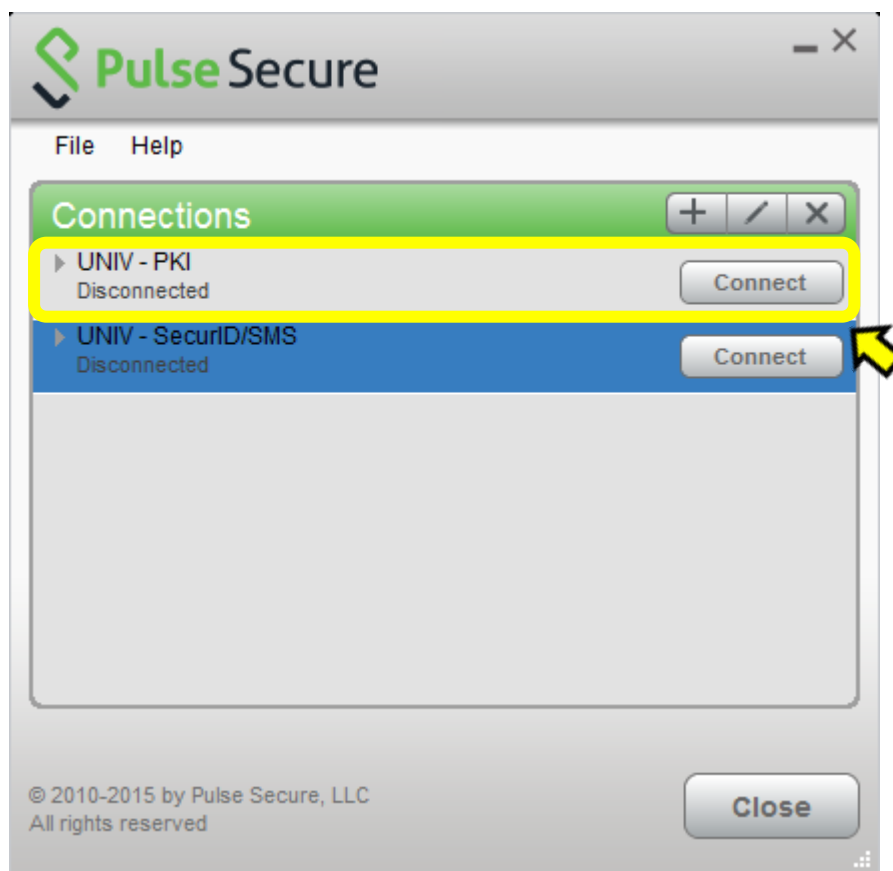
A. VPN client

After the certificates have been automatically stored on the laptop, the VPN client (UNIV VPN, Pulse Secure) is offering a new connection alternative which is *UNIV – PKI*. The connection alternatives are:

- **UNIV – PKI:** VPN connection to the university network uses the certificate which is installed in the device. The user is asked only the user account and the password. The certificate replaces the strong identification in which a one-time passcode would be needed otherwise.
- **UNIV – SecurID/SMS:** In addition to the user account and the password, the VPN connection to the network of the university requires, the typing of the one-time passcode of the strong identification. One can get it either as a text message (SMS) to the mobile phone or it is read in the RSA SecurID device.

Act this way when opening the VPN connection:

- Choose **UNIV – PKI**, click **Connect** and enter your user account and the password
 - If you have multiple certificates, select account@univ.yo.oulu.fi certificate if asked

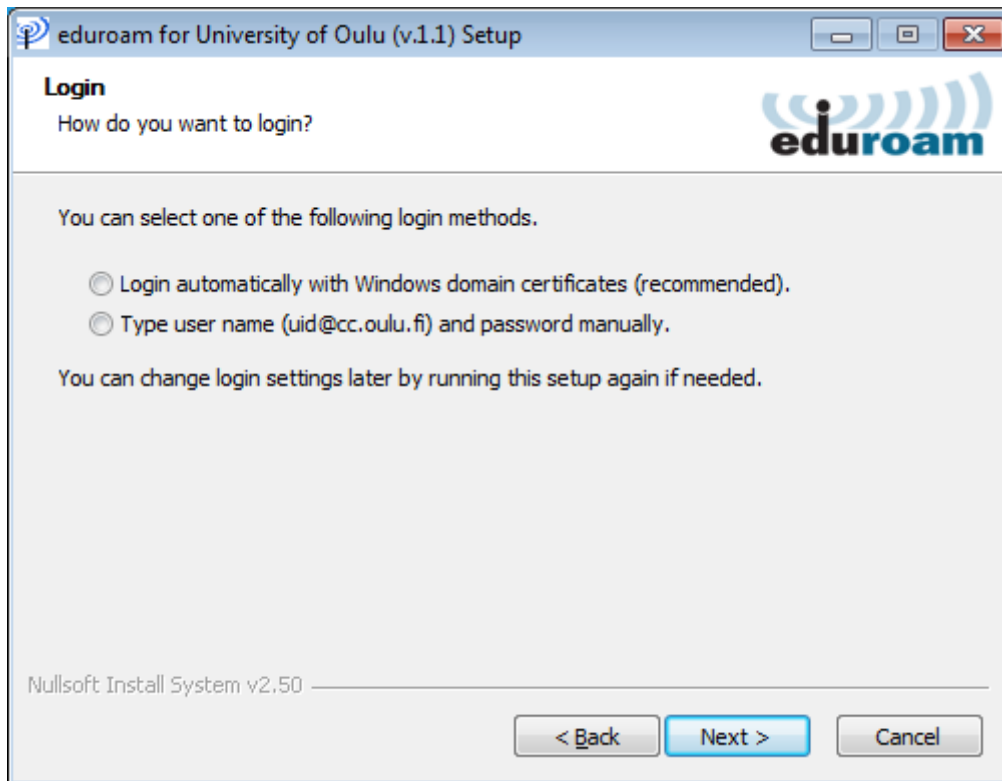


- When you want to finish the connection, click **Disconnect** at the same position
- Close the window by clicking **Close**
- If the login does not operate for some reason, you can use SecurID or SMS, in that case choose the connection **UNIV – SecurID/SMS**

B. Wireless eduroam network

In order to utilise the PKI certificate from now on in all eduroam connections, install the certificate this way:

- Double click the icon **eduroam WLAN** on laptop's desktop
- eduroam installer will start, click **Next**
- Choose the login method **Login automatically with Windows domain certificates** and then click **Next**



- Finish the installation by clicking **Finish**
- The setting will remain and the automatic login will occur in all eduroam networks
 - If you have multiple certificates, select account@univ.yo.oulu.fi certificate if asked
- If you encounter some problems, you can then change the login method: run **eduroam WLAN** again and choose another login method: **Type user name and password manually**