

## Pulse Secure

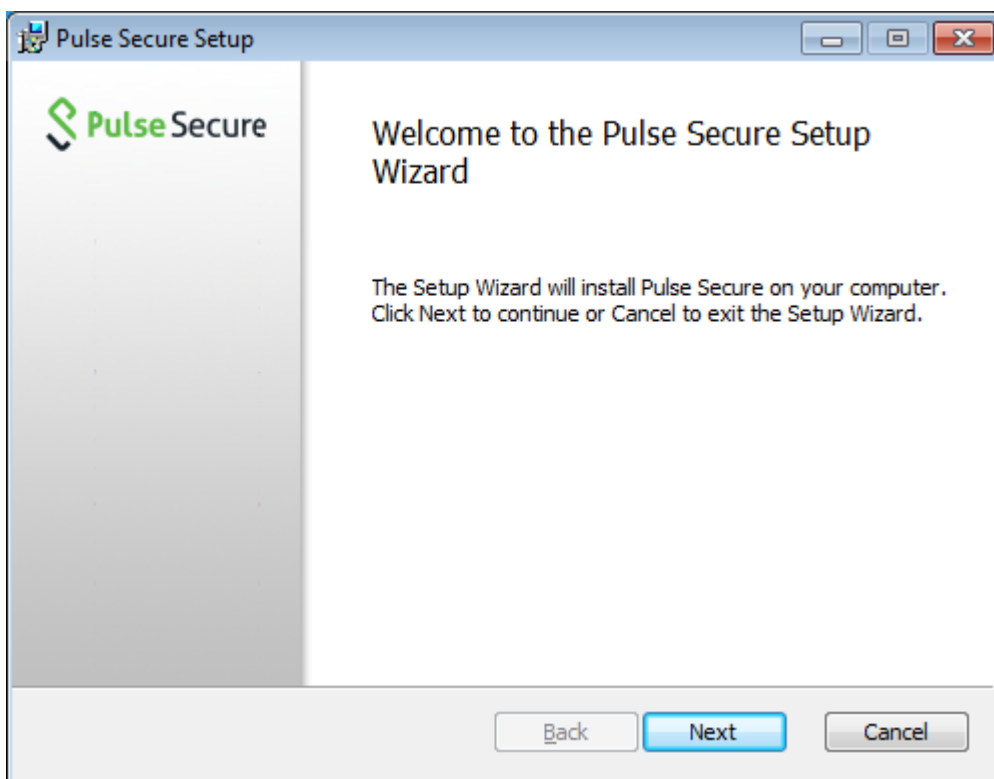
### Installation

NOTE: If your computer is a centrally administered UNIV workstation, Pulse Secure has already been installed and there is a shortcut on desktop (UNIV VPN).

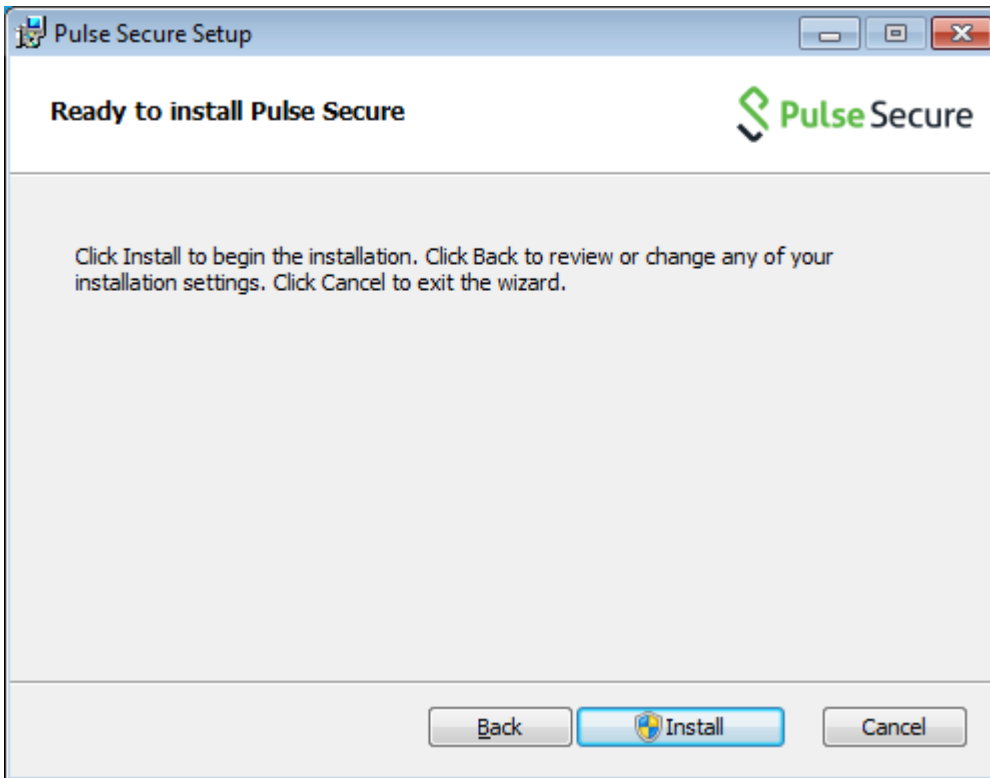
Open download page <https://www.oulu.fi/jakelu/vpn/> with web browser and select correct installation file for your operating system:

- OS X → dmg-tiedosto
- Windows 32bit → 32bit installer msi file
- Windows 64bit → 64bit installer msi file

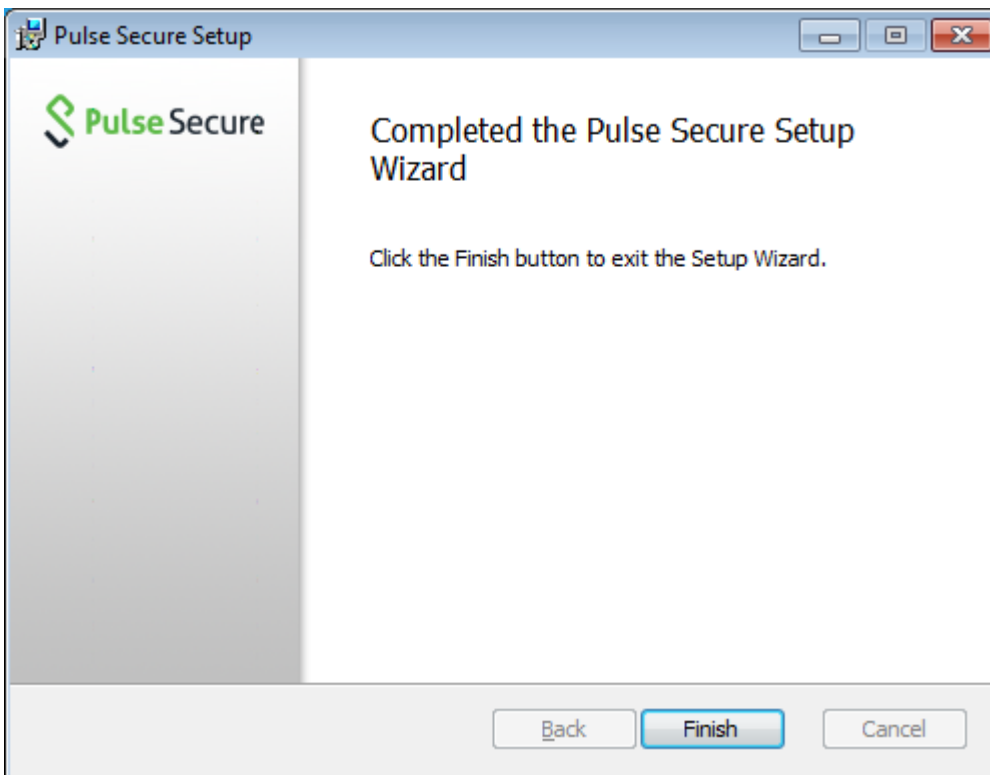
### Installation in Windows workstation, for example



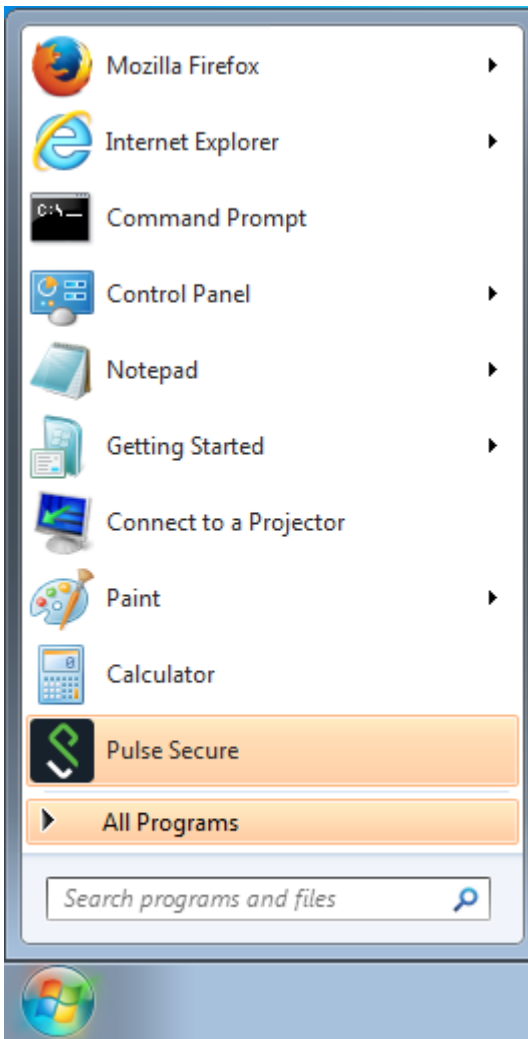
*Click Next.*



*Click Install and accept changes.*



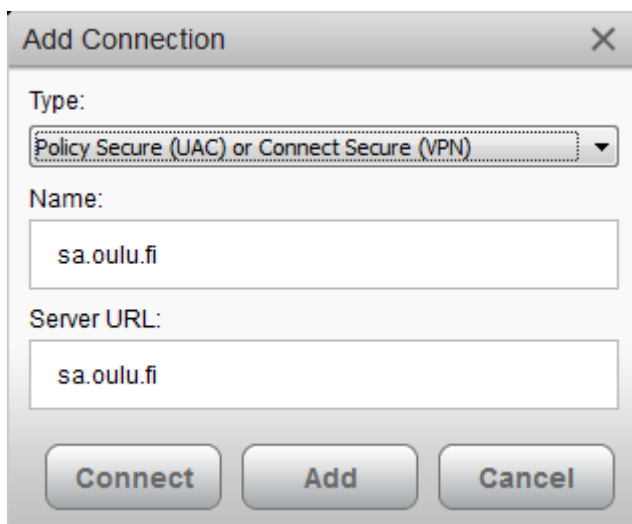
*Installation is ready, click Finish.*



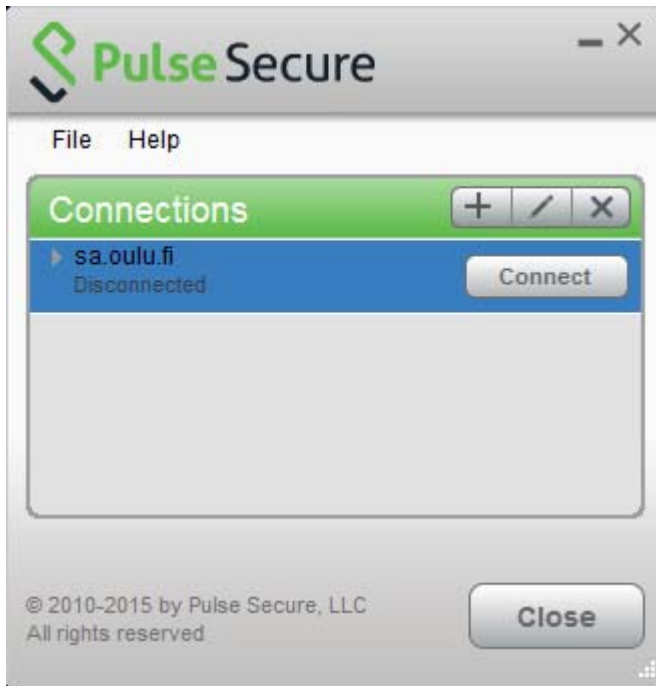
*Click Pulse Secure in Start menu.*



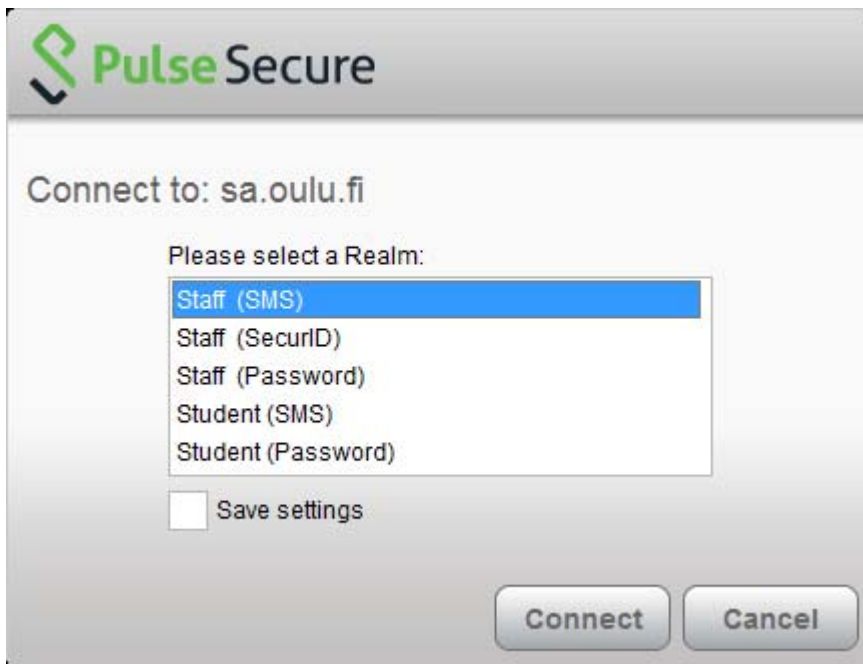
Create a new profile by clicking + .



Type the name: **sa.oulu.fi** and Server URL: **sa.oulu.fi** and select Add.



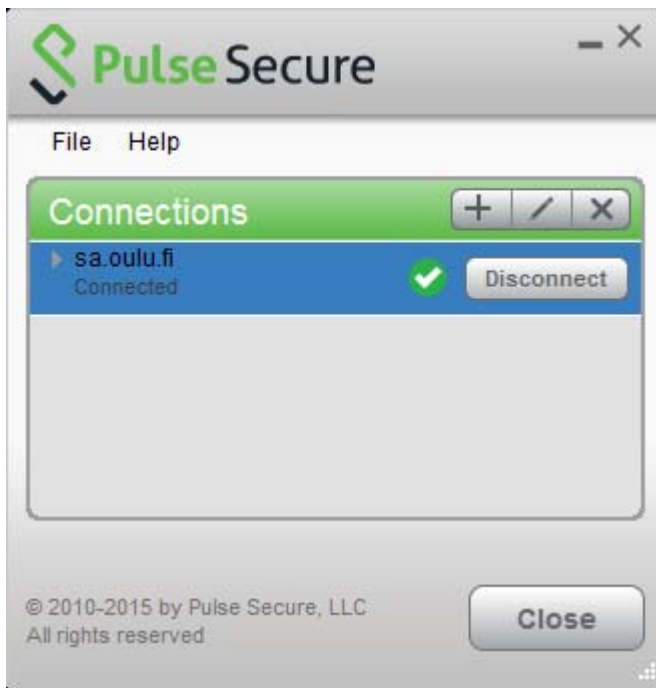
Click Connect.



Choose an authentication method:

- Staff (SMS)
- Staff (SecurID)
- Student (SMS)

More information on web pages of IT Administration Services: [Strong authentication with VPN](http://www.oulu.fi/ict/node/28006)  
(<http://www.oulu.fi/ict/node/28006>).



*After logging in and checking the workstation the VPN Connection is ready to use.*

## Contact

IT Administration Services: [etatuki@oulu.fi](mailto:etatuki@oulu.fi)