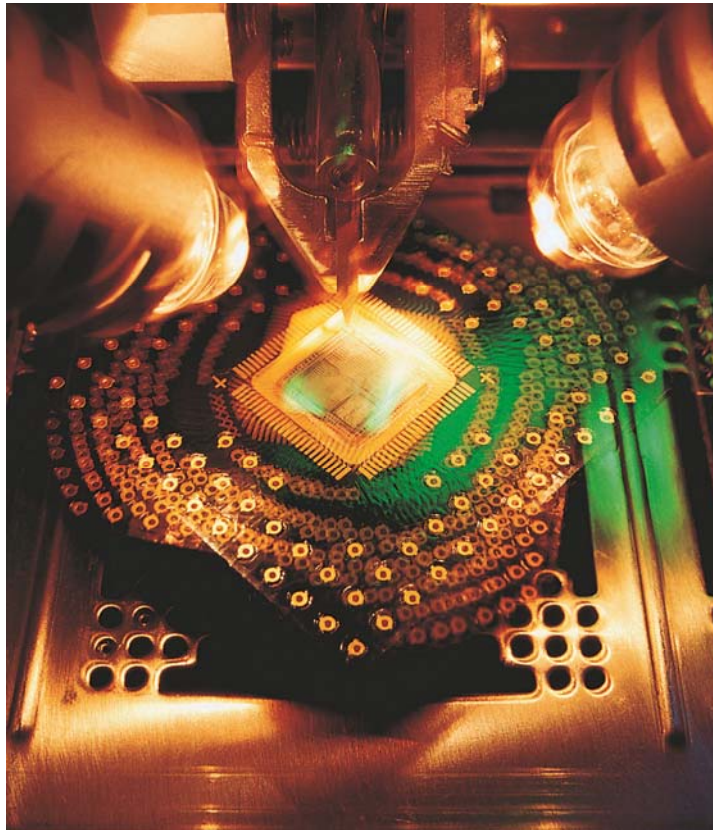




## What does RFIC mean?

- A) Remote File Integrity Check
- B) Read Format Intelligent Cloud
- C) Radio Frequency Integrated Circuit



## Doctoral Students in Radio Frequency (RF) Engineering

Centre for Wireless Communications (CWC) and Circuit and Systems Research group (CAS) at University of Oulu, Finland are offering several positions for Doctoral Students in the area of RF integrated circuit design.

We are looking for talented research-oriented people who are interested in research in the field of Future RF and Wireless Communications. Especially in this call we are looking for people who are interested in RF electronics and integrated circuits for 5G wireless systems and beyond. Specific research topic of this call is:

- RF and mmW integrated circuits design towards 5G combined with:
- RF and mmW circuit and electromagnetic simulation techniques including RFIC/mmW design
- RF electronic circuit fundamentals and prototyping
- RF transceiver architecture analysis and receiver or transmitter system partitioning
- RF Measurements

As a Doctoral Student you will carry out research work within a research team, publish research results in the most esteemed international for a, including international conferences abroad, attend doctoral courses and complete your doctoral thesis within 3–4 years.

Link to full job description: <http://www.oulu.fi/itee/pesti>

Additional information (applications must be submitted by using the electronic system SAIMA by 12.2.2017):

Prof. Aarno Pärssinen ([aarno.parsinen@oulu.fi](mailto:aarno.parsinen@oulu.fi))

Prof. Timo Rahkonen ([timo.rahkonen@oulu.fi](mailto:timo.rahkonen@oulu.fi))

There are also post-doc positions open on same area.