

What's Up in Doctoral Education

12 January 2017

Markku Juntti



Background: Changing Environment

- Science policy, university profiling
- New strategy of University of Oulu
- Structural and organizational changes of Oulu
- Changes in Education Services (Koulutuspalvelut, KOPA)
- Strict financial situation, lack of resources

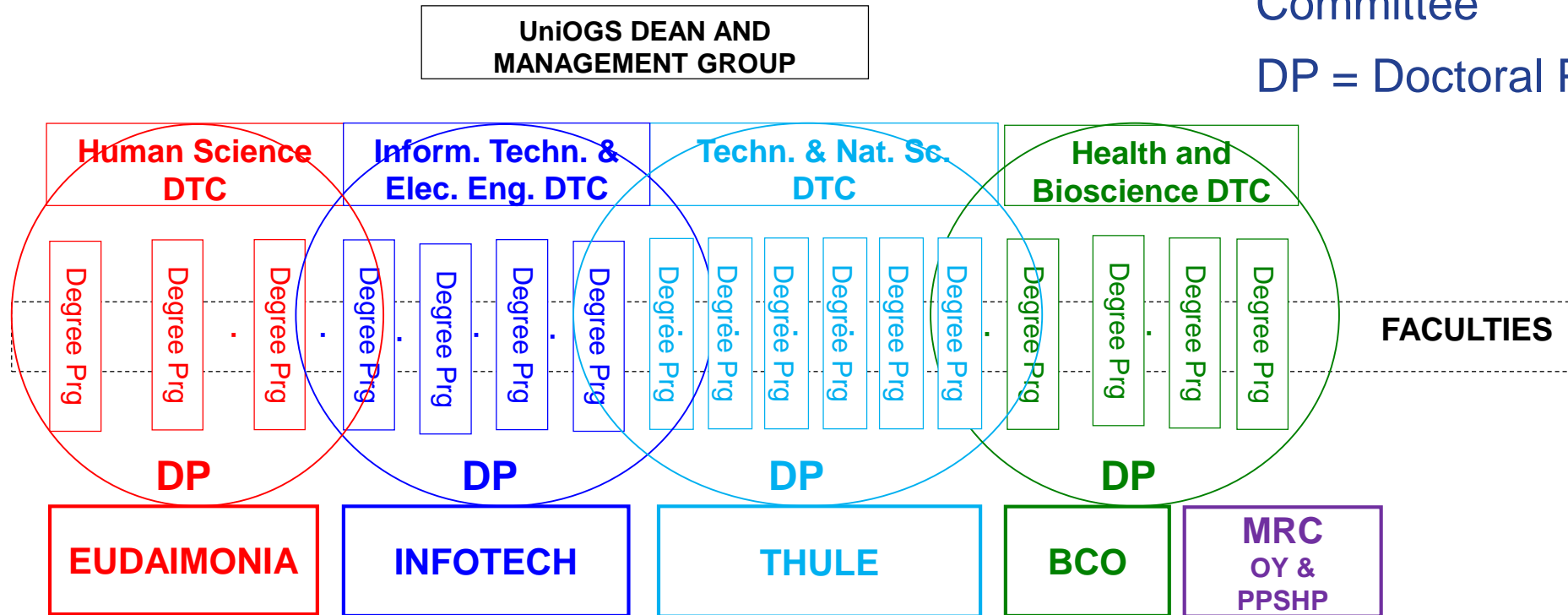
- Experience of UniOGS operation 2012-2016
- Many players and layers
- Partially unclear structure and scattered responsibilities



New Organization of Doctoral Training

DTC = Doctoral Training Committee

DP = Doctoral Program



- Doctoral training led by UniOGS
- Doctoral Programs part of UniOGS and led by a DTC
- Less players => flatter structure



Doctoral Degree Programs

1. **Biology**
2. **Physics and astronomy**
3. **Geosciences and mining**
4. **Chemistry**
5. **Geography**
6. **Mathematical sciences**
7. **Information processing science**
8. **Architecture**
9. **Mechanical engineering**
10. **Process and environmental engineering**
11. **Electrical engineering**
12. **Computer science and engineering**
13. **Industrial engineering**
14. **Communications engineering**
15. **Human sciences**
16. **Education**
17. **Economics**
18. **Health sciences**
19. **Dentistry**
20. **Clinical medicine**
21. **Biomedicine and biochemistry**

Numbers of Degree Programs per DTC

- **HBS 4.3**
(Health and biosciences, HBS)
- **HS 3.5**
(Human Sciences, HS)
- **TNS 9.2**
(Technology and Natural Sciences, TNS)
- **ITEE 4**
Information Technology and Electrical Engineering



Operation volume, average 2013-2015

Old DTCs

no. students, degrees

- HBS 28%, 32%
- HS 27%, 18%
- TNS 46%, 49%

New DTCs

no. students, degrees

- HBS 28%, 32%
- HS 27%, 18%
- TNS 27%, 29%
- ITEE 19%, 20%

Part-time students more common, e.g., in HS, which has an impact on the work load.

Disclaimer: Based on faculty data in SISU.



DTC Chair

- Pre-examiners, opponent, custodian
- Follow-up group
- Changes in supervisors
- Research plan, personal study plan (PSP)
- **Leads the DP training**



DTC

- **Leads the DP training**
- Field-specific training and course funding

- **Quality control**
- Student selection, matters of principle
 - Student application evaluations
- Research plan, PSP
- Degree requirements
- Permission to defend
- Thesis grading



Degree Program Director

- **Member of DTC**
- **Preparation of degree requirements**
- **Organization of field-specific training**
 - Course program
 - Leading the work with other senior scientists
 - Funding decisions at at DTC
- **Student evaluations:**
 - Study right applications
 - Following the progress of student population (SISU)
 - Support in case of problems with coordinators
- **PSP and research plan approval in case of (small) changes**



Changes for the student?

- **One point of contact (UniOGS) both for quality control (processes) and training**
- Practical day-to-day work of course in RGs, RUs, faculties...
- **DTC and Degree Program Director have overall responsibility of doctoral training**
- **Less bodies, meetings and players**